

## LIMITED WARRANTY STATEMENT

This Warranty does not apply to defects or damages to Products caused by human error-related factors or any other non-ordinary factors, including but not limited to:

- A、 Malfunctions or damages caused by force majeure such as natural calamity or any inappropriate use by any person.
- B、 Product has been repaired or taken apart by unauthorized technicians.
- C、 Warranty label is altered, damaged or missing.
- D、 Product serial number does not conform to ADATA's records, or is difficult to ascertain.


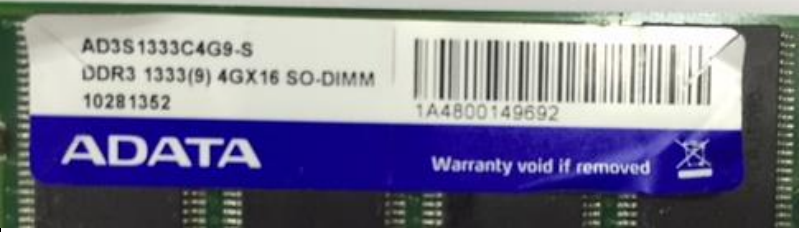

本保固條款不適用於因人為因素或非自然耗損所造成的威剛產品損壞。包括但不限於以下情形：

- A、 因天災等不可抗力因素，或人為不當操作等因素所致之損壞。
- B、 該產品經過非威剛科技授權之技術人員維修或拆裝。
- C、 該產品上的保固標籤或防拆標籤被更改、破損或遺失。
- D、 產品序號不符或序號破損、模糊不清。

以下為各產品線不予保固之標準：

The following conditions are exempt from coverage under the product warranty：

### MODULE

| Warranty Label Issue 保固標籤異常   |  |
|---|--|
| <p>Alteration, removal and illegible of the type or unreadable serial number of the Product./ Product serial number does not conform to ADATA's records, or is difficult to ascertain<br/>條碼標籤污損或不清，邊角有折入、掀起或明顯皺褶現象或貼紙破損現象。</p> |  |
| <p>Label tilted or seems has been altered.<br/>標籤貼紙翹起，有撕過痕跡或貼紙疑似被更換過的。</p>  |  |
| <p>ADATA warranty label missing<br/>保固標籤貼紙遺失</p>  |  |

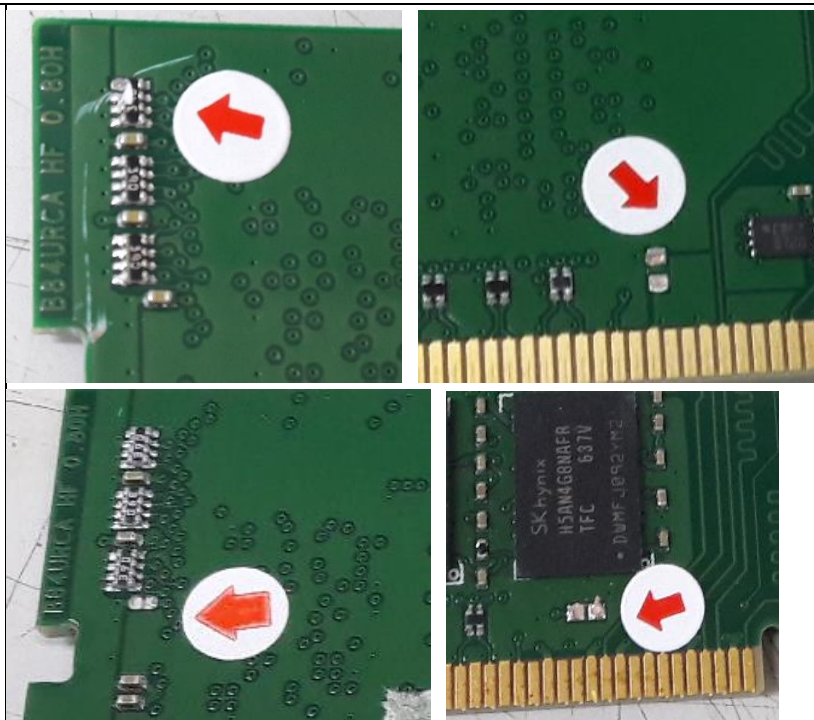
# LIMITED WARRANTY STATEMENT

Not ADATA's product ; Warranty label doesn't match with actual product  
 標籤貼紙與產品實物規格不符

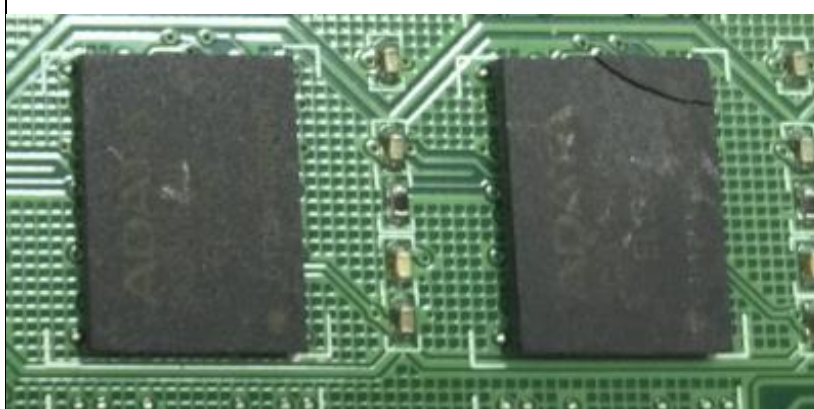


## Customer induced damaged: Parts Missing or Damaged

Part missing and damaged such as capacitor.  
 零件掉落 (包含電容、電阻、電桿、IC等零件)



Component broken  
 IC 破損


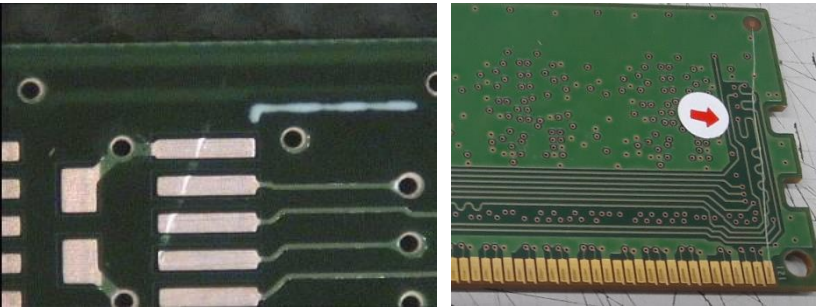


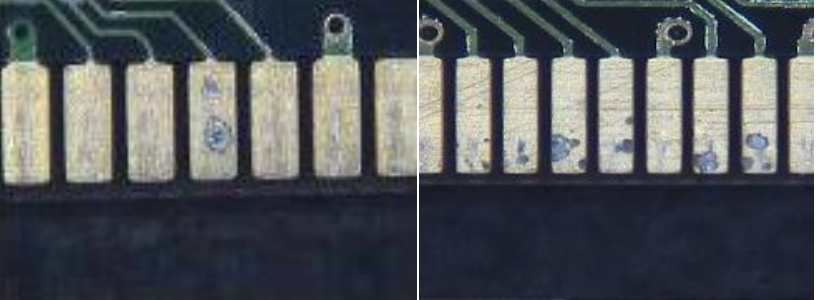


Component Shedding or missing  
 IC掉落或是移位

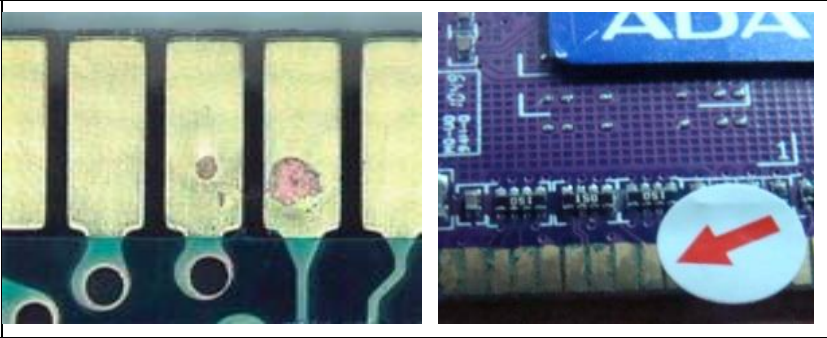

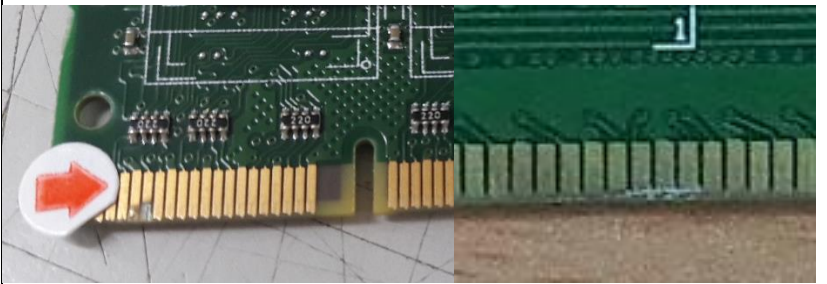




## Customer induced damaged : PBC

# LIMITED WARRANTY STATEMENT

|   |  |
|---|--|
| <p>Board edge delaminated<br/>Improper pre-installation and transport and/or stress caused by dropping, stepping on, or otherwise mishandling the module during installation.<br/>角邊損壞 (包含在安裝過程中不慎磨損的部分·或是掉落等不當的人為操作導致的損傷或是PCB版分層現象)。</p> |    |
| <p>PCB board damaged or scratched<br/>PCB板刮傷 (包含在金屬部分或是板面)</p>  |    |
| <p>PCB Bending<br/>PCB板彎曲</p>   |   |
| <p>PCB Broken<br/>PCB板 破裂</p>   |  |
| <p>Customer induced damaged: Connector</p>  |  |
| <p>Connector erosion due to humidity or exposure to environment beyond product specifications.<br/>金手指金屬異常·包含沾錫、損傷、嚴重損傷至露出銅面、</p>   |  |

# LIMITED WARRANTY STATEMENT

|  |  |
|--|--|
|  |    |
| <p>Connector burning (possible accompanied by PCB overheating).<br/>金手指金屬因不當操作造成燒板異常</p>   |    |
| <p>Deep connector scratches<br/>Connector scratching / corrosion<br/>金手指金屬部分嚴重損傷及裂痕。</p>   |   |
| <p>Connector scratched and corrosive<br/>金手指金屬部分有腐蝕性現象。</p>  |  |
| <p>Repair of or modifications to the ADATA Modules not approved, authorized, or performed by ADATA.<br/>該產品經過非威剛科技授權之技術人員維修或拆裝，或產生的痕跡。</p> |  |

# LIMITED WARRANTY STATEMENT

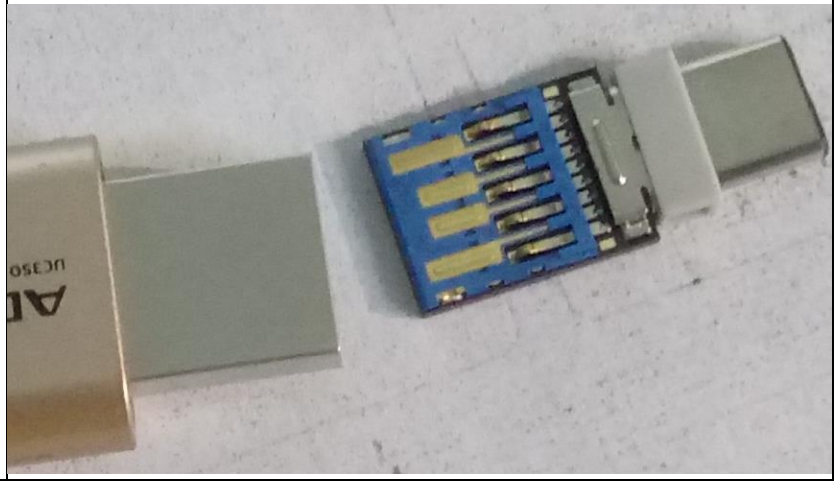
## UFD

|  |  |
|--|--|
| <p>The connector bend or deformed<br/>USB 接頭變形</p>   |    |
| <p>Damaged and scratched on the connector or/and SN number and capacity are unrecognized.<br/>USB 接頭嚴重刮傷或是磨損無法辨識產品序號。</p>                |    |
| <p>USB connector cracked or broken.<br/>USB 接頭斷裂</p>   |   |
| <p>PCB cracked<br/>PCB板裂傷</p>  |  |
| <p>Not ADATA's product<br/>- inner parts are not ADATA's<br/>- Not ADATA's SN<br/>偽品：實物與產品標示不符、接頭序號非威剛編碼</p>                             |  |
| <p>Repair of or modifications to the ADATA UFDs not approved, authorized, or performed by ADATA.<br/>該產品經過非威剛科技授權之技術人員維修或拆裝，或產生的痕跡。。</p> |  |

## LIMITED WARRANTY STATEMENT

The housing and product are detached caused by dropping, stepping on, or otherwise mishandling the product during installation.

產品因不慎掉落以致外殼與零件分離現象，及安裝過程中的人為損壞。



# LIMITED WARRANTY STATEMENT

## CARD

Connector damaged:

Cracked or bending /golden finger oxidized /  
scratched on golden fingers.

產品刮傷損壞，傷及金手指部分、卡片外殼破損。



Write protect switch cracked.

卡片白色卡榫斷裂或遺失。



Cracked, chipping or damaged on the card

產品斷裂及缺角損傷。



Cover and product detached.

產品零件與外殼分離現象。



# LIMITED WARRANTY STATEMENT

|   |  |
|---|--|
| <p>Non-commercial item : labeled "Sample".<br/>         樣品。</p>   |    |
| <p>Repair of or modifications to the ADATA card not approved, authorized, or performed by ADATA.<br/>         該產品經過非威剛科技授權之技術人員維修或拆裝，或產生的痕跡。</p>  |    |
| <p>Damage derived from unintended use: severe casing abrasion, exposure of components.<br/>         產品嚴重損壞及刮傷露出銅面</p>   |   |
| <p>Not ADATA's Product /<br/>         Unrecognized as ADATA's product /<br/>         The wording on the product doesn't match with the actual product<br/>         偽品 / 無法辨識為威剛產品 /<br/>         產品印刷標示與實際內容物不符合。</p> |  |



# LIMITED WARRANTY STATEMENT

## HDD

Out of warranty (according to the warranty label)/  
Product serial number does not conform to ADATA's  
records, or is difficult to ascertain.  
依產品序號判定為過保固期之產品



Warranty label missing  
撕除產品保固標籤



Warranty label has been altered.  
保固標籤被移除再重貼。



Inner disk doesn't match with warranty label / inner  
disk is not ADATA's.  
(product has been replaced by another inner disk)  
產品標籤與內部裸碟規格不符合



# LIMITED WARRANTY STATEMENT

Physical damaged on the housing  
產品外殼損壞。



Housing is concave or convex.  
產品外殼表面不平整，有隆起現象



housing has been detached  
產品曾被拆裝、解體或是疑似撬開過的痕跡。



Physical damage on the inner disk.  
內部裸碟有壞損現象。



# LIMITED WARRANTY STATEMENT

Physical induced damaged in the inner disk /  
Inner disk has concave or convex mark.  
內部裸碟變形。



Inner disk damaged due to humidity.  
內部裸碟因使用環境造成異常現象，如腐蝕、生鏽  
等異常現象。



Label on the inner disk has been altered.  
內部裸碟上的標籤被移除再重貼

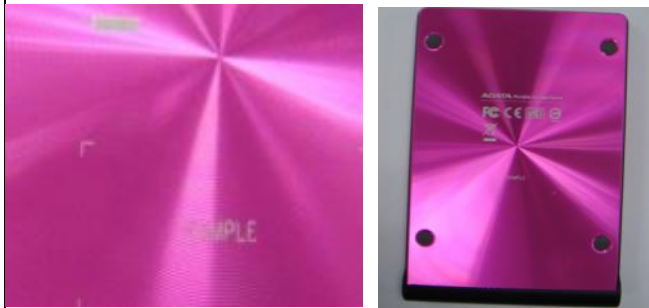


# LIMITED WARRANTY STATEMENT

No disk inside the housing  
無内部裸碟



Non-commercial item : labeled "Sample".  
样品



# LIMITED WARRANTY STATEMENT

## SSD - Solid State Drives

Out of warranty (according to the warranty label)/  
Product serial number does not conform to ADATA's records, or is difficult to ascertain.

依產品序號判定為過保固期之產品、  
序號貼紙磨損致無法辨識序號及產品型號、  
或是序號非威剛編碼。



Physical damage on the housing /Housing has concave or convex mark.

產品外殼因外力造成凹陷現象



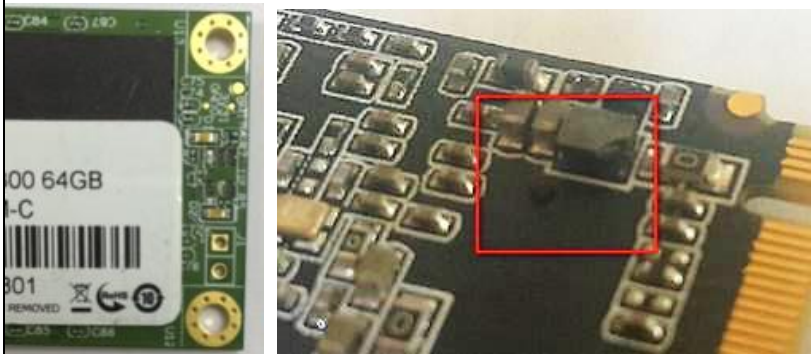
Warranty void damaged/screw holes fragile stickers damaged, warped or tearing / product has been altered

產品易碎貼紙損壞或不平整有被撕起的痕跡

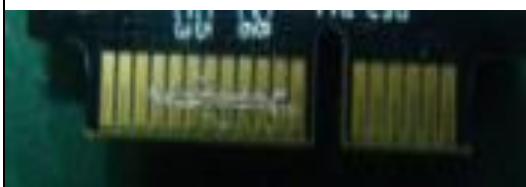
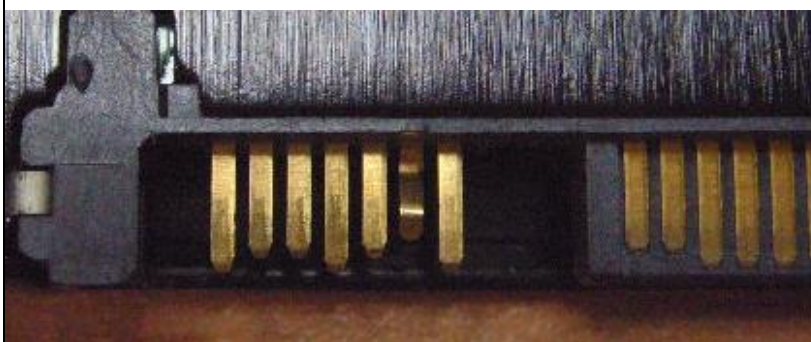


# LIMITED WARRANTY STATEMENT

Parts missing or damaged.  
產品零件損壞、顆粒破損或裂痕現象。



Connector damaged  
金手指接頭、插槽損壞或異常。



Repair of or modifications to the ADATA SSD not approved, authorized, or performed by ADATA.  
該產品經過非威剛科技授權之技術人員維修或拆裝、或產生的痕跡。



## LIMITED WARRANTY STATEMENT

Component has been altered /  
Repair of or modifications to the ADATA SSDs  
not approved, authorized, or performed by  
ADATA.

產品零件曾被非威剛授權之人員拆解或維修  
過。



Physical damage caused by dropping.

產品因不慎掉落而造成的損壞，例如接頭斷  
裂。



# LIMITED WARRANTY STATEMENT

## POWER BANK

Out of warranty (according to the warranty label)/  
Product serial number does not conform to ADATA's  
records, or is difficult to ascertain.  
依產品序號判定為過保固期之產品、  
序號貼紙磨損致無法辨識序號及產品型號、  
或是序號非威剛編碼。



Warranty label missing  
保固貼紙遺失或被撕除。



Housing has been detached.  
產品曾被拆裝、解體或有撬開過的痕跡。



USB port damaged  
USB 接口損壞。





# LIMITED WARRANTY STATEMENT

## LIGHTNING CABLE

Customer induced damaged – cracked / bending  
Micro USB 接頭遺失、彎折或斷裂



Customer induced damage on the cable  
線材因外力變形、磨損或斷裂



Connector missing  
Micro USB 接頭遺失

