



ADATA S596

Firmware Install Tool

User Guide

Version 2.0

WARNING:

**This firmware update is only valid for
ADATA S596 Solid State Drives**

**Before upgrade to F/W V2.0 version
Please make sure to upgrad your S596 to F/W V1.0**

**ADATA recommends that you back up your data
as a precaution before proceeding.**



Table of Contents

1. Feature	4
2. QuickStart:.....	5
3. BIOS setup:.....	8
4. Upgrade firmware:	11
5. History:	13



Before you start you will need the following items:

- 1 x (preferably empty) USB flash drive
- Downloaded version of the firmware update program **ADATA S596 Firmware Update Tool**
- please find the files on http://www.adata.com.tw/?action=product_download&cid=3&piid=35



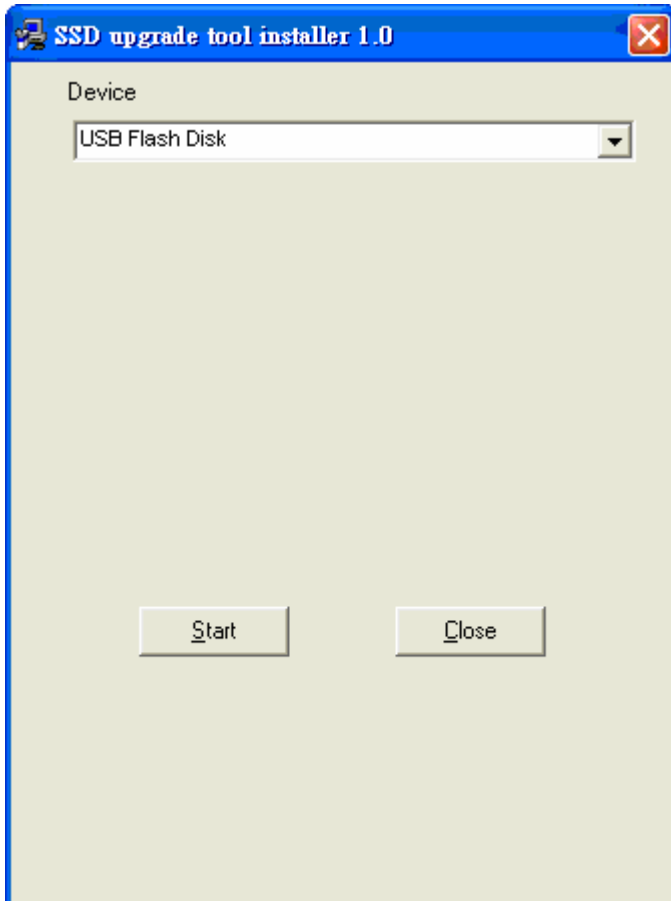
1. Feature

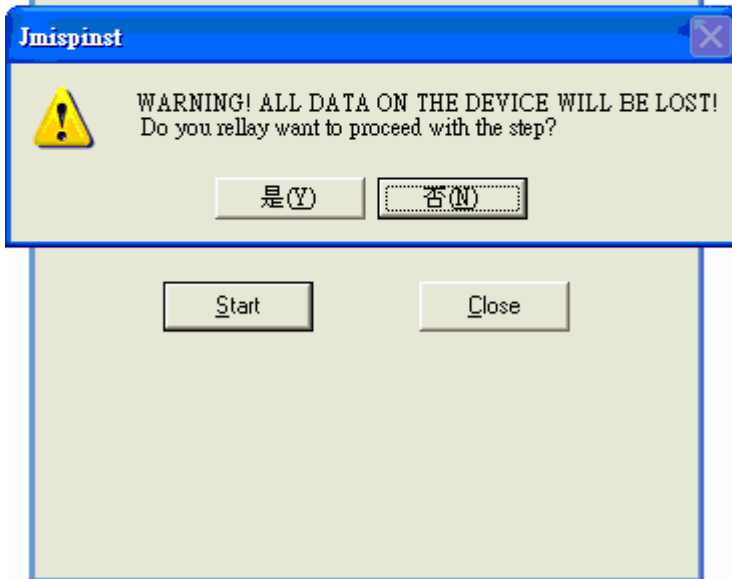
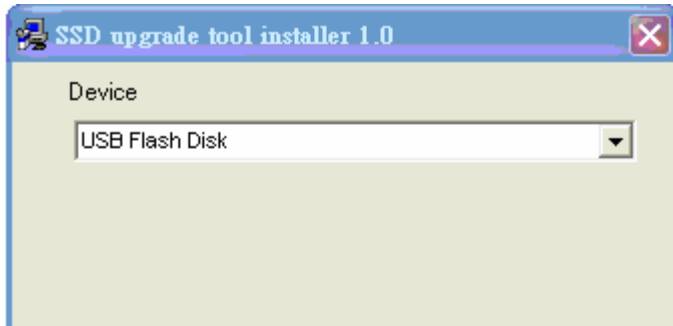
- Auto makes an USB device bootable.
- Auto copy ISP tool into the bootable device.

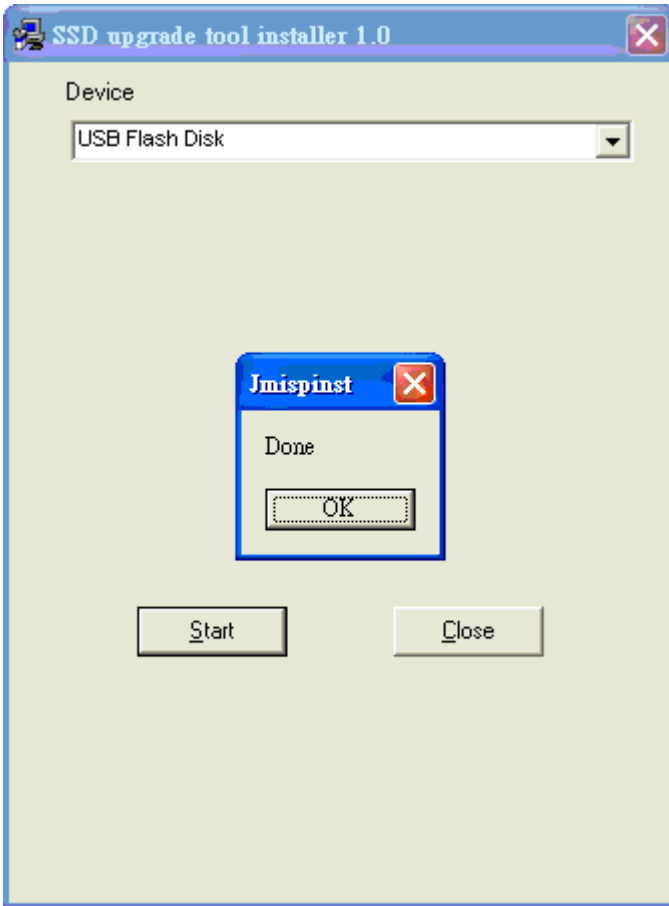


2. Quick Start:

- Insert an USB device.
- Execute the tool (JMISPIInst) and press the “Start” button.



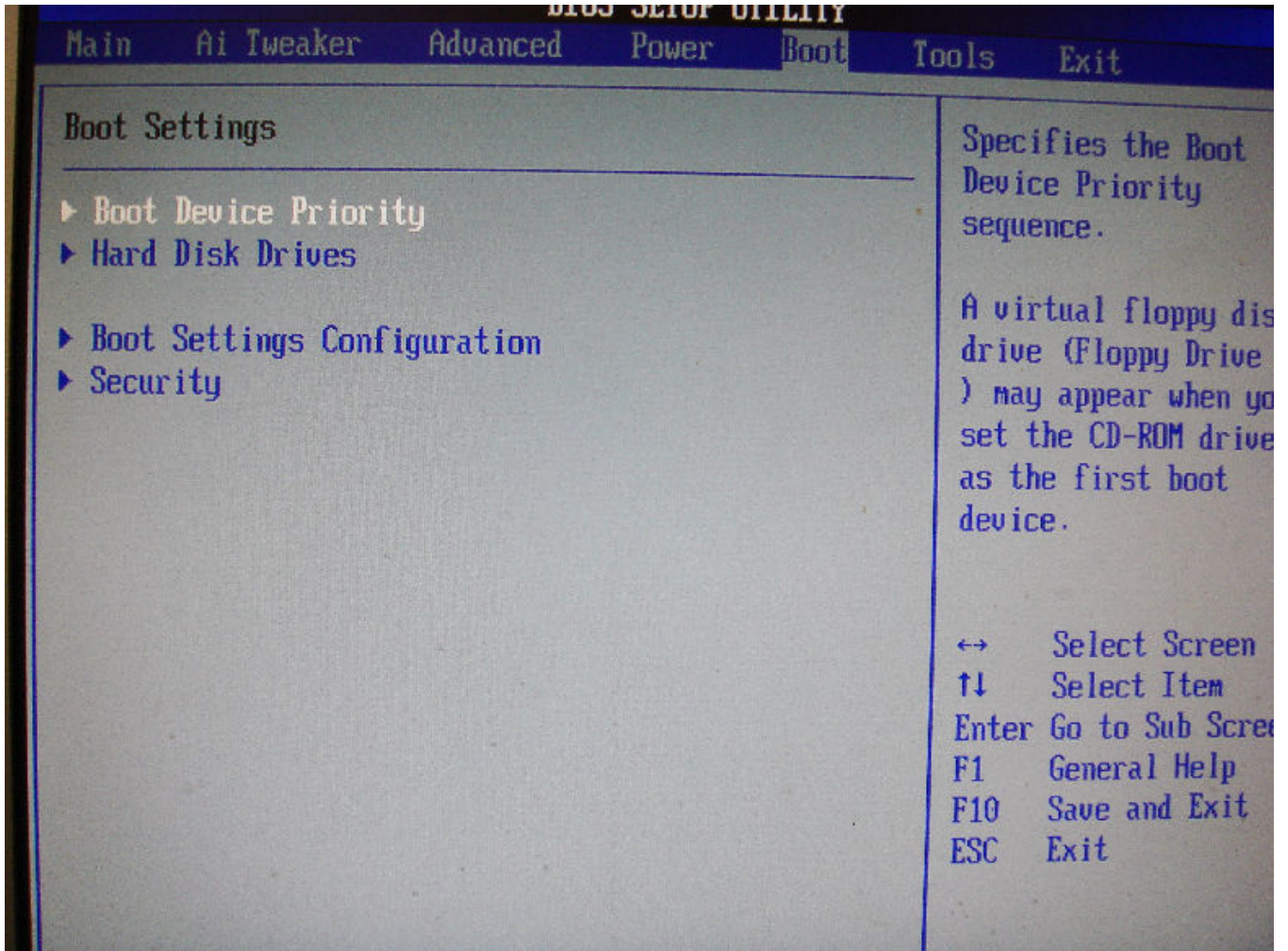


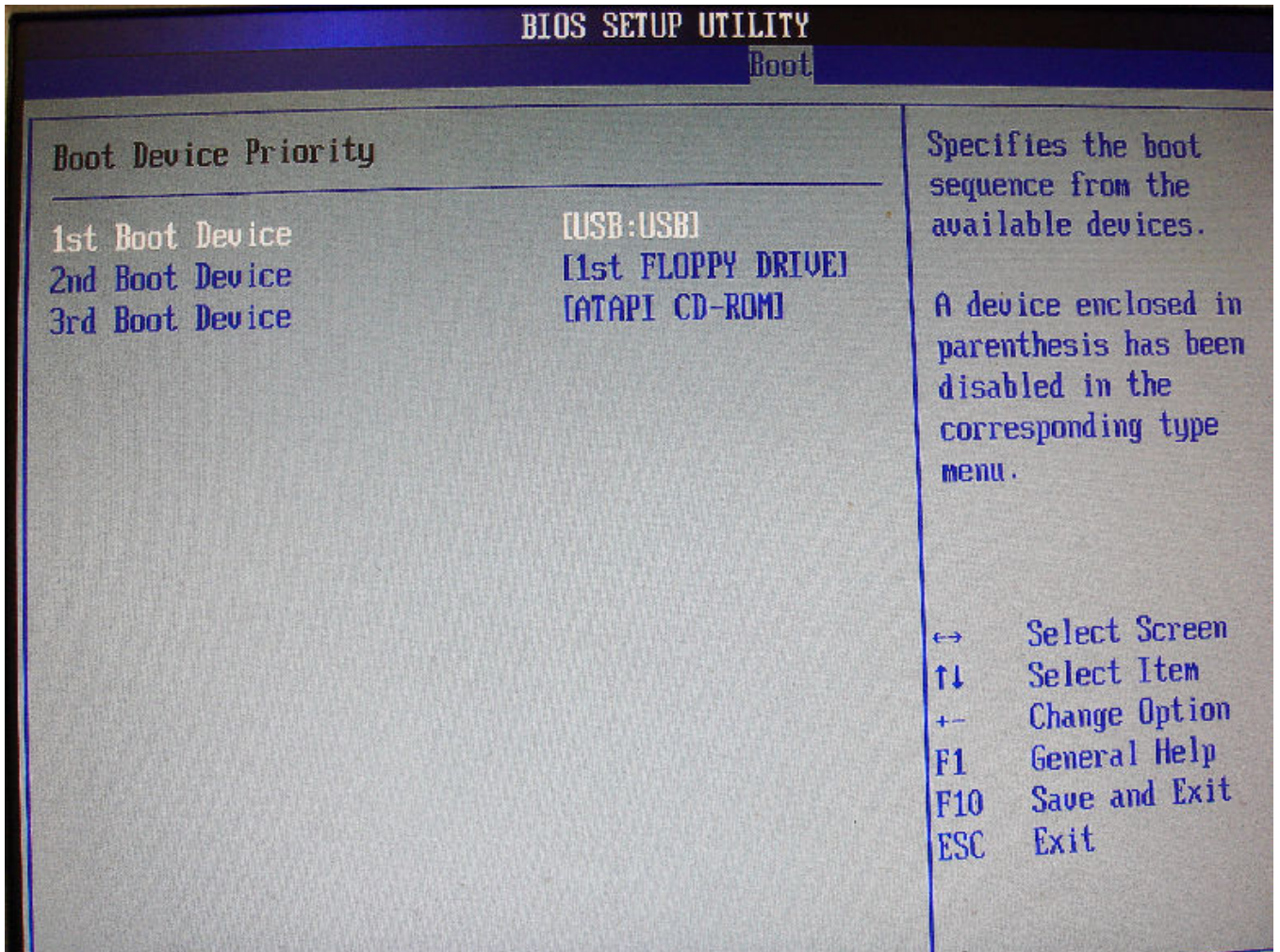




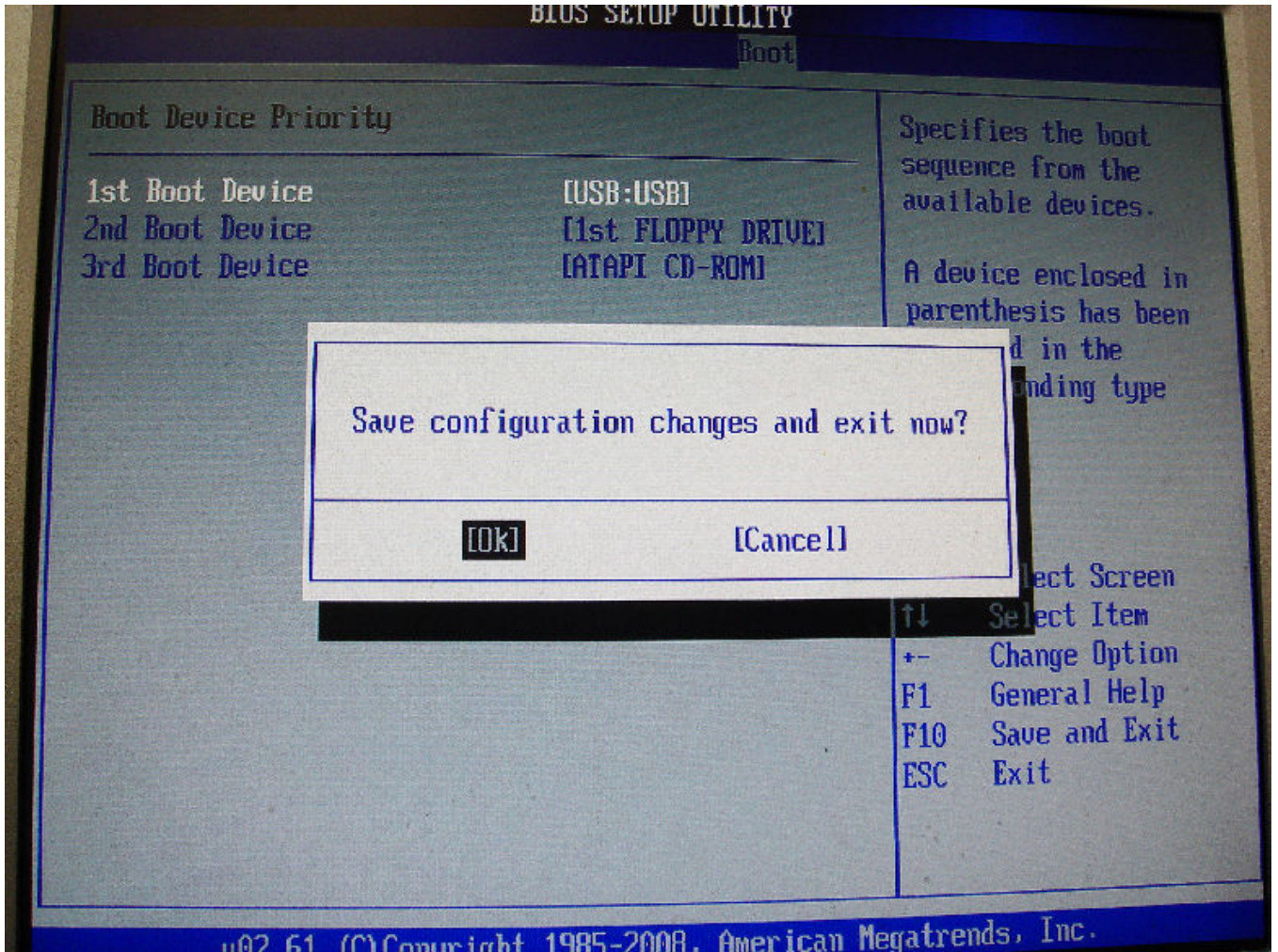
3. BIOS setup:

- Change Boot Device Priority





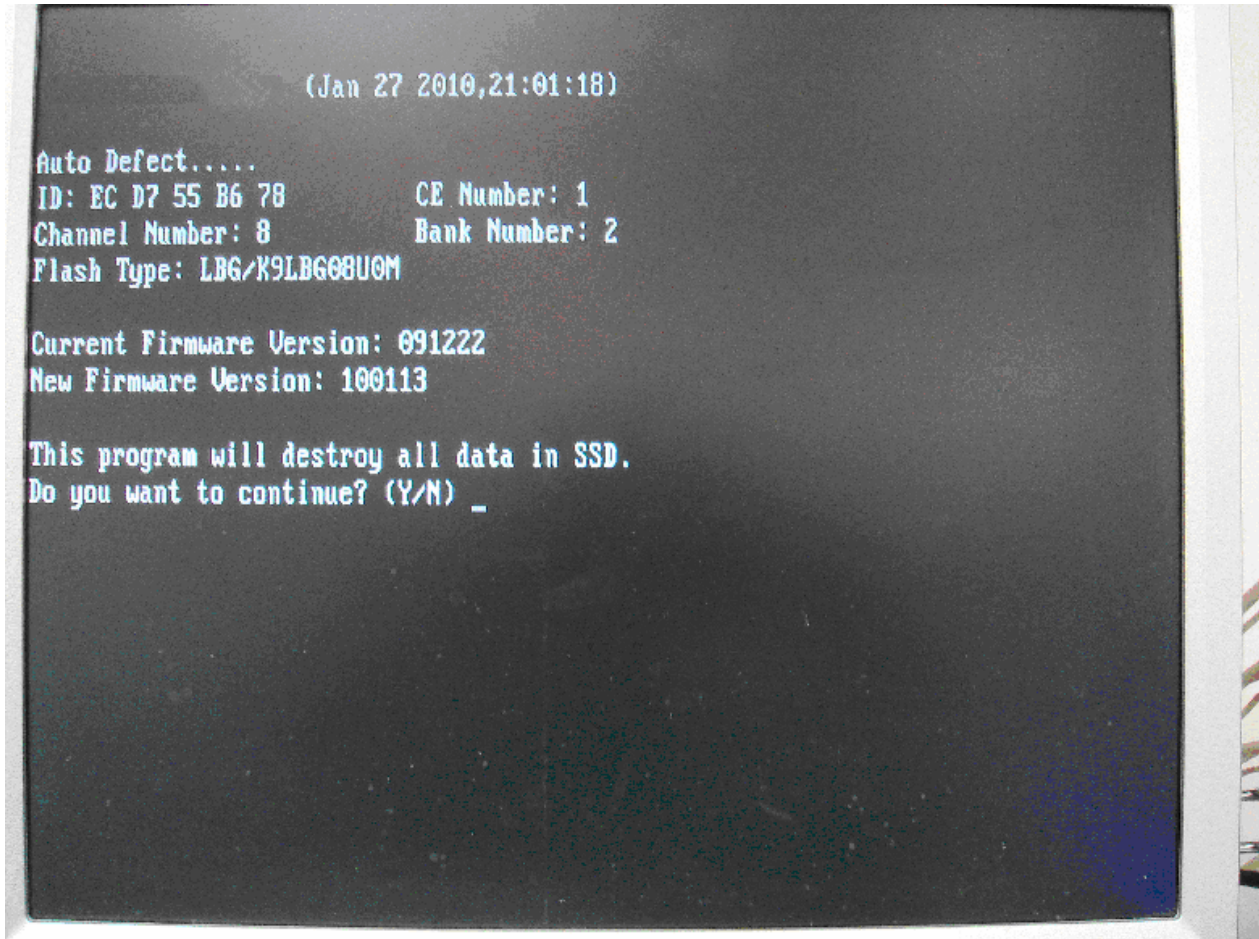
- Configure SATA as "IDE mode"
-
- Save and exist

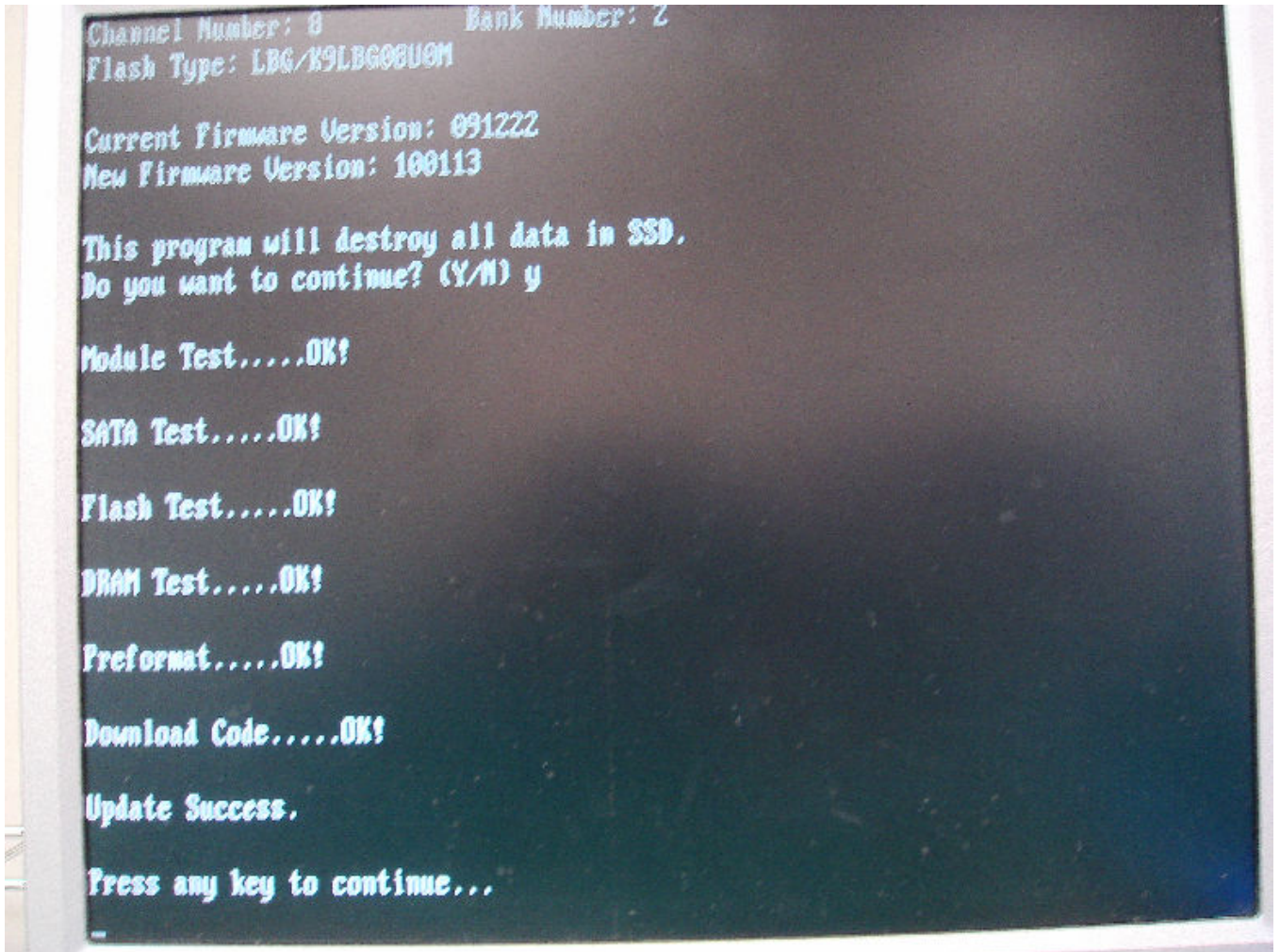




4. Upgrade firmware:

- Please “Y” to upgrade firmware automatically.
- Reboot after upgrade firmware successfully.





Congratulations, you have completed your firmware update.

Enjoy.



5. History:

Version	Date	Remark
1.0	10/08/18	Upgrade firmware 091222 firmware to 100113
2.0	10/09/28	Upgrade firmware to 100312