



Mac OS drive format



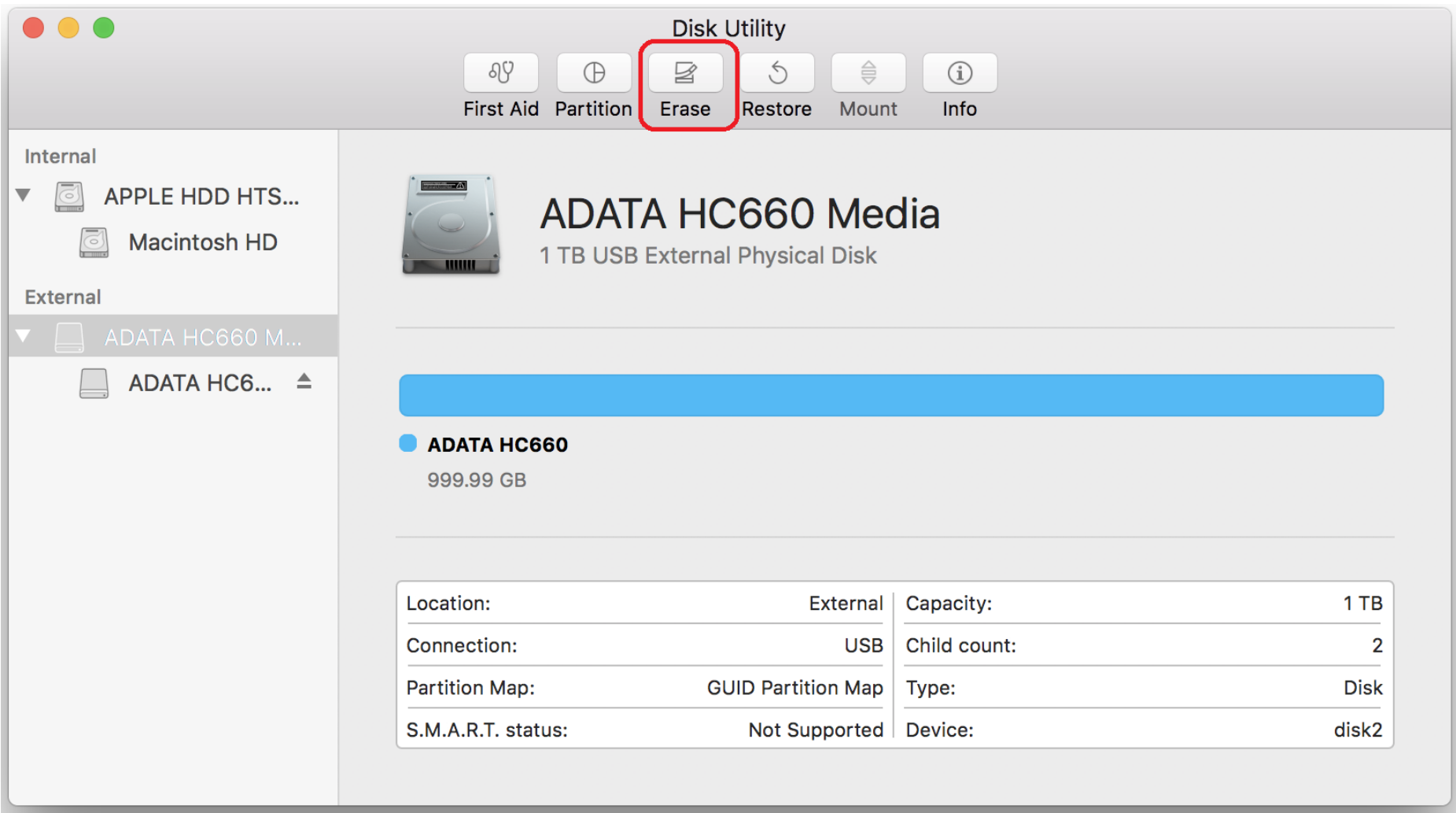
# Drive Format – Mac OS

## STEP 1. Open Disk Utility



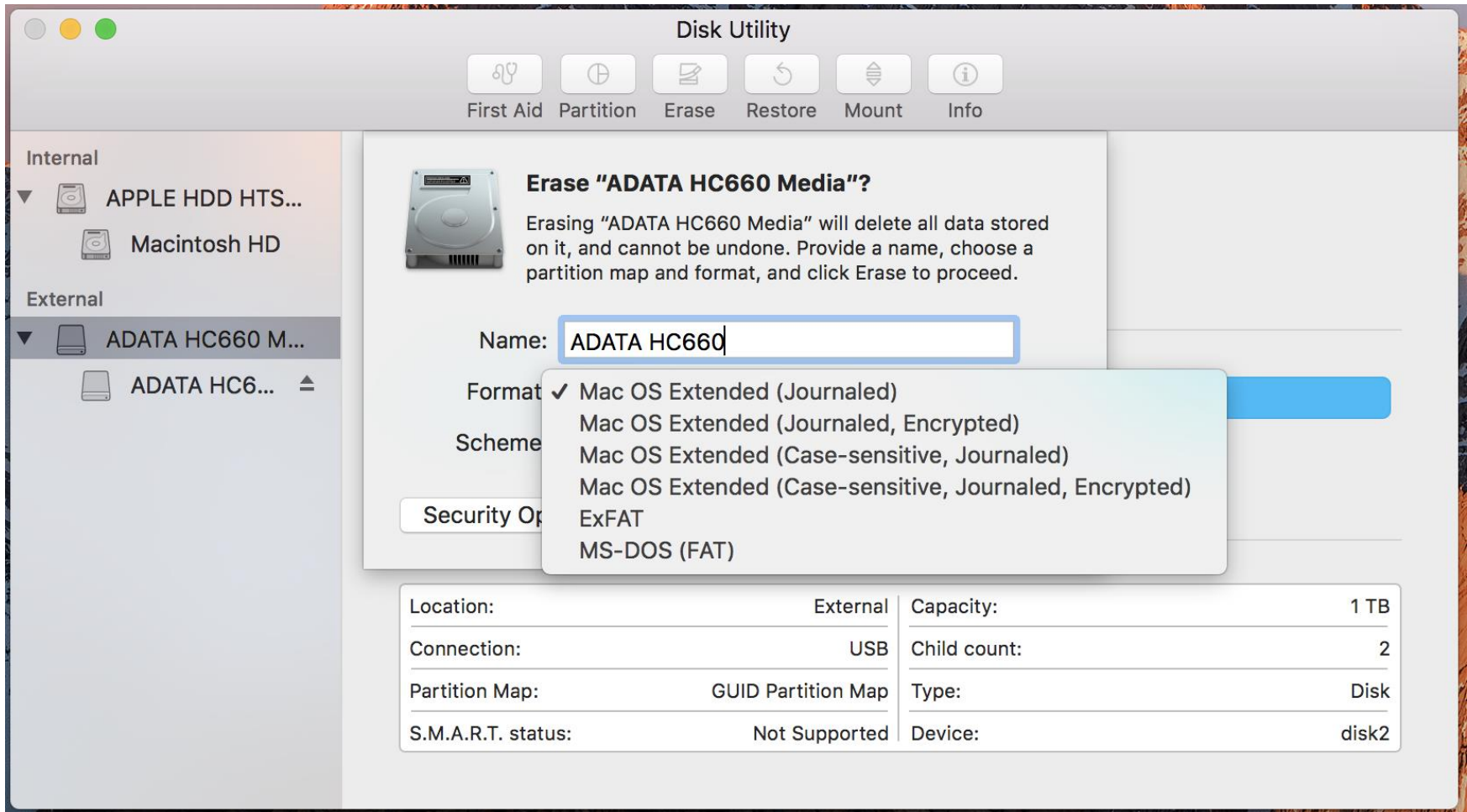
# Drive Format – Mac OS

## STEP 2. Choose Erase



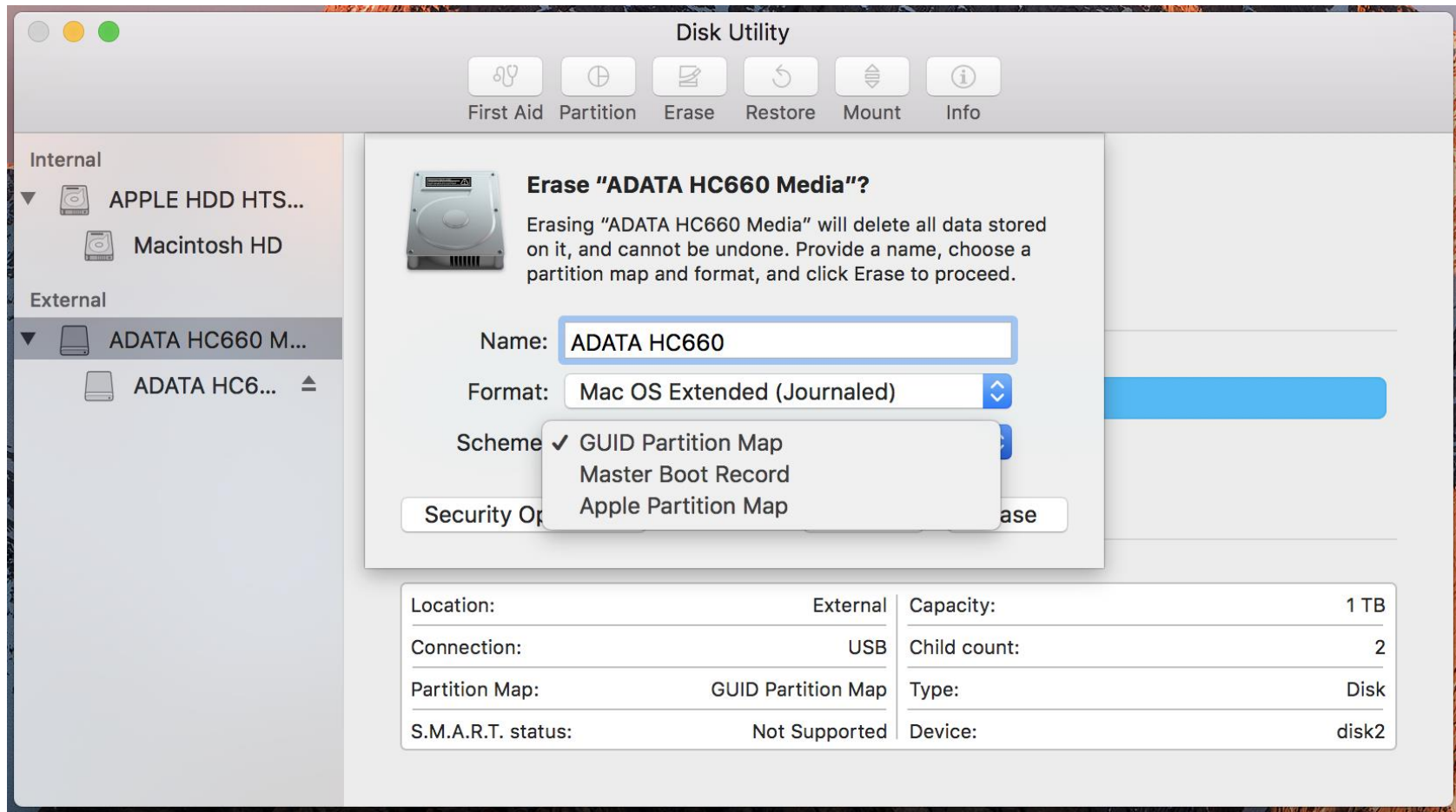
# Drive Format – Mac OS

## STEP 3. Select format type (default recommended)



# Drive Format – Mac OS

## STEP 4. Select scheme type (default recommended)



# Drive Format – Mac OS

## STEP 5. Balance secure erase and format speed



The screenshot shows the Disk Utility application window. The left sidebar lists internal drives (APPLE HDD HTS... and Macintosh HD) and external drives (ADATA HC660 M... and ADATA HC6...). The 'Security Options' dialog is open, allowing the user to choose between 'Fastest' and 'Most Secure' erasing methods. The 'Fastest' option is selected, and a warning message states: 'This option does not securely erase the files on the disk. A disk recovery application may be able to recover the files.' The 'OK' button is highlighted in blue. Below the dialog, the 'Security Options...' button is visible. At the bottom of the window, a table displays drive specifications.

Location:	External	Capacity:	1 TB
Connection:	USB	Child count:	2
Partition Map:	GUID Partition Map	Type:	Disk
S.M.A.R.T. status:	Not Supported	Device:	disk2



# Drive Format – Mac OS

The screenshot shows the Disk Utility application window. The title bar reads "Disk Utility". Below the title bar are six buttons: "First Aid", "Partition", "Erase", "Restore", "Mount", and "Info". The left sidebar shows a tree view of disks. Under "Internal", there are "APPLE HDD H..." and "Macintosh HD". Under "External", there is "ADATA HC660...". The main area displays a progress bar and a message: "Erasing 'ADATA HC660 Media' and creating 'ADATA HC660'". Below this message is a blue progress bar and a "Done" button. A "Show Details" button is also visible. Below the progress bar, the drive "ADATA HC660" is selected, showing a capacity of "1 TB". At the bottom, a table provides technical details for the drive.

Location:	External	Capacity:	1 TB
Connection:	USB	Child count:	1
Partition Map:	Master Boot Record	Type:	Disk
S.M.A.R.T. status:	Not Supported	Device:	disk2



THANK YOU

