



XPG

Catalogue 2024



XTREME PERFORMANCE GEAR

At XPG, we don't just craft Xtreme Performance Gear for streamers, Esports athletes, and tech enthusiasts. We also work closely and directly with the community to gain valuable insight into the needs of real users, like you. We strive to create products with the highest standards of stability, reliability, and performance in mind. We deeply value innovation in our approach to design and engineering, which has earned the XPG brand several prestigious international distinctions such as the "iF Design" and "Good Design" awards. We strive to disrupt the status quo of product development by introducing new concepts, materials, and technologies to the industry. In addition to developing award winning products, we play an active role in the gaming community by sponsoring and supporting Esports events, organizations, and teams from around the world. XPG was established in 2008 by ADATA, a world leader in DRAM module manufacturing.

Be a Hero.

However you play, we are with you every step of the way. To cherish your GGs and support you in defeat. Because we are all gamers and this is our lifestyle. So #GAMETOTHEXTREME, and thank you for letting XPG join you on your adventures. We're honored to help you live out your dreams with the absolute best gear crafted on this planet. **Welcome to Team XPG!**

INDEX

GAMING DDR5 DRAM

LANCER NEON RGB	04
LANCER / LANCER RGB	05
LANCER RGB ROG CERTIFIED	06
LANCER BLADE / LANCER BLADE RGB	07
CASTER / CASTER RGB	08

GAMING DDR4 DRAM

SPECTRIX D35G	09
SPECTRIX D50	10
SPECTRIX D45G	11
SPECTRIX D41	12
GAMMIX D35	12
GAMMIX D45	13
GAMMIX D30	13
GAMMIX D20	14
GAMMIX D10	14

GAMING SSD

GAMMIX S55	15
GAMMIX S70 BLADE	17
GAMMIX S60	18
GAMMIX S50 CORE	19
SPECTRIX S20G	20
GAMMIX S11 PRO	21
SX8200 PRO	22

GAMING PC PSU

FUSION	23
CYBERCORE II	24
CORE REACTOR II	25
CORE REACTOR II VE	26
KYBER	27
12VHPWR	28
PROBE	29
PYLON	30

GAMING PC CHASSIS

INVADER X MINI	31
INVADER X BTF	32
INVADER X	33
BATTLECRUISER II	34
VALOR AIR PLUS	35
VALOR STORM	36
VALOR MESH	37
VALOR AIR	38
DEFENDER PRO	39
STARKER AIR	40

GAMING THERMAL

VENTO R 120 ARGB PWM	41
VENTO 120 ARGB PWM	42
HURRICANE 120/140 ARGB PWM	43
VENTO PRO 120 PRO PWM	44

PRIME BOX + SOFTWARE

PRIME BOX	46
PRIME SOFTWARE	47

GAMING LAPTOP

XENIA 15G	48
-----------	----

GAMING MOUSE

ALPHA WIRELESS	50
ALPHA	51

GAMING HEADSET

PRECOG STUDIO	52
PRECOG S	53

GAMING KEYBOARD

SORCERER	54
SORCERER MINI	55

GAMING MOUSE PAD

FRONTLINE XL	56
FRONTLINE XL SAGA SERIES	57

LANCER NEON RGB

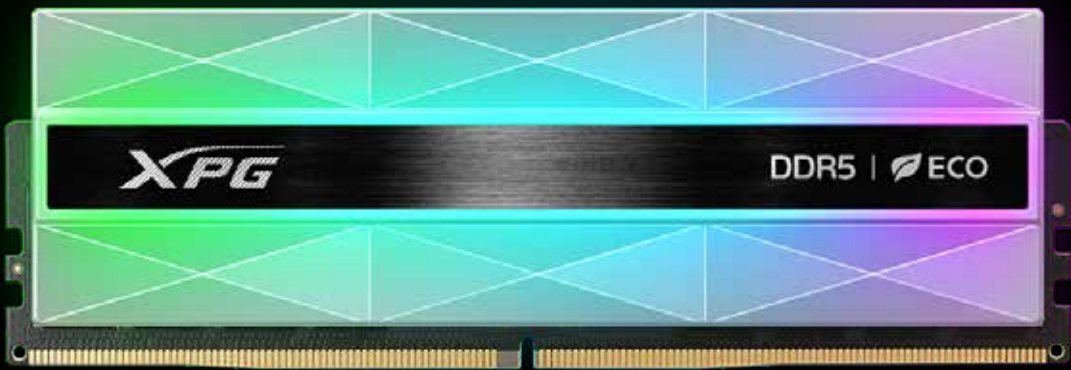
ABSOLUTELY ILLUMINATED



60%
RGB AREA

50%
RECYCLED PLASTIC

10% TEMP
REDUCED WITH HEAT DISSIPATING
COATING



- ▶ CAPACITY
16GB / 24GB
- ▶ SPEED
DDR5 6000MT/s
DDR5 6400MT/s
DDR5 6800MT/s
DDR5 7200MT/s
DDR5 8000MT/s
- ▶ HEATSINK COLOR
SILVER GREY
- ▶ DIMENSIONS (L X W X H)
133.35 x 45.18 x 8.7mm



LANCER LANCER RGB

UP YOUR GAME



STYLISH

BOLD LINES & BRUSHED FINISH

CUSTOMIZABLE

RGB LIGHTING

EASY OVERCLOCKING

SUPPORTS XMP 3.0 & EXPO



- ▶ CAPACITY
16GB / 24GB / 32GB
- ▶ SPEED
DDR5 6000MT/s
DDR5 6400MT/s
DDR5 6800MT/s
DDR5 7200MT/s
DDR5 8000MT/s
- ▶ HEATSINK COLOR
BLACK / WHITE
- ▶ DIMENSIONS (L X W X H)
133.35 x 43.56 x 8 mm

LANCER RGB ROG CERTIFIED

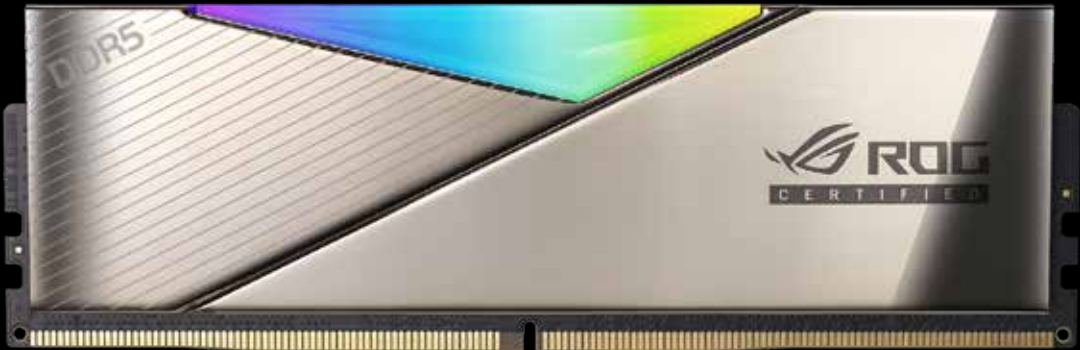
CERTIFIED XTREME



PERFORMANCE
ROG-CERTIFIED OVERCLOCKING

CUSTOMIZABLE
RGB LIGHTING

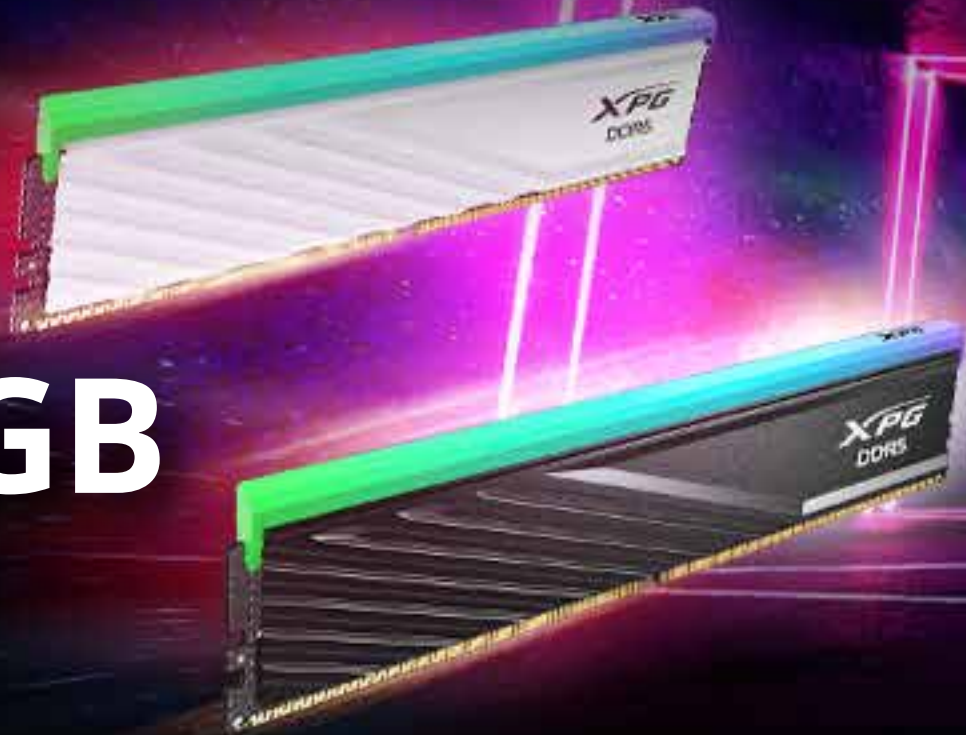
EASY OVERCLOCKING
SUPPORTS XMP 3.0



- ▶ **CAPACITY**
16GB / 24GB
- ▶ **SPEED**
DDR5 6600MT/s
DDR5 7200MT/s
- ▶ **HEATSINK COLOR**
BLACK MIRROR
- ▶ **DIMENSIONS (L X W X H)**
133.35 x 43.56 x 8 mm

LANCER BLADE LANCER BLADE RGB

SLEEK EFFICIENCY, COMPACT POWER



COMPACT DESIGN
LOW-PROFILE HEATSINK

CUSTOMIZABLE
RGB LIGHTING

EASY OVERCLOCKING
SUPPORTS XMP 3.0 & EXPO



- ▶ **CAPACITY**
8GB/16GB/24GB/32GB
- ▶ **SPEED**
DDR5 5600MT/s
DDR5 6000MT/s
DDR5 6400MT/s
- ▶ **HEATSINK COLOR**
BLACK
WHITE
- ▶ **DIMENSIONS (L X W X H)**
RGB 133.35 x 40 x 7.86mm
Non-RGB 133.35 x 33.8 x 7.8mm



CASTER CASTER RGB

AT TOP SPEED



STYLISH
GEOMETRIC DESIGN

CUSTOMIZABLE
RGB LIGHTING

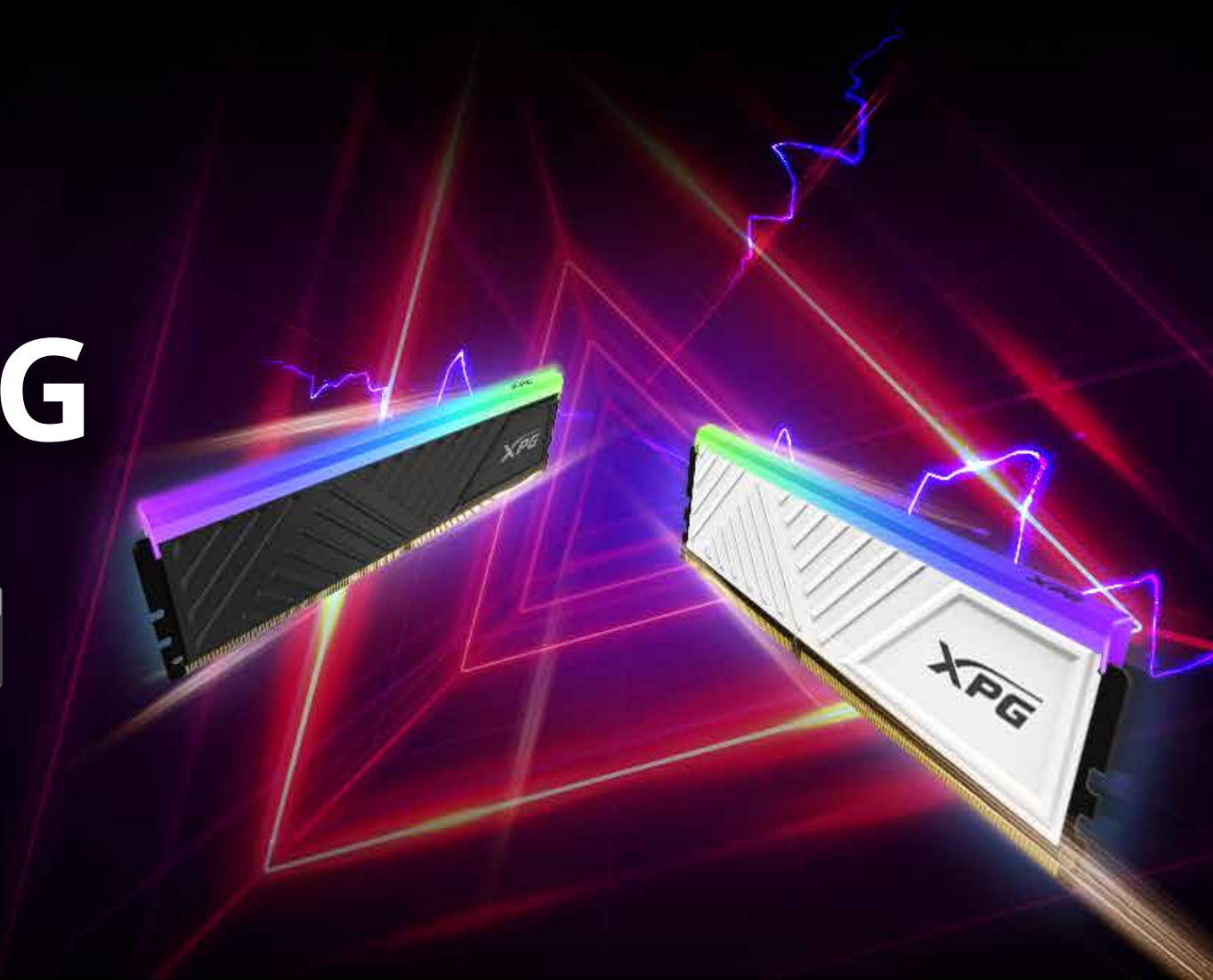
EASY OVERCLOCKING
SUPPORTS XMP 3.0 & EXPO



- ▶ **CAPACITY**
16GB / 32GB
- ▶ **SPEED**
DDR5 6000MT/s
DDR5 6400MT/s
- ▶ **HEATSINK COLOR**
TUNGSTEN GREY
- ▶ **DIMENSIONS (L X W X H)**
RGB 133.35 X 43 X 8.4 mm
Non-RGB 133.35 X 37.5 X 8.4 mm

SPECTRIX D35G

FULL THROTTLE



COMPACT DESIGN
LOW-PROFILE HEATSINK

CUSTOMIZABLE
RGB LIGHTING

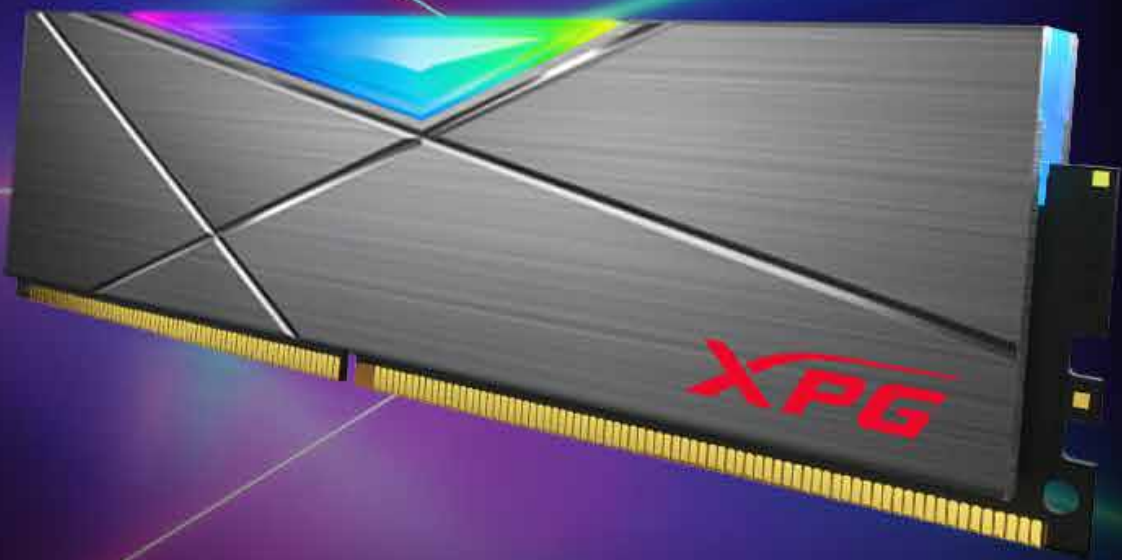
EASY OVERCLOCKING
SUPPORTS XMP 2.0



- ▶ **CAPACITY**
8GB/16GB/32GB
- ▶ **SPEED**
3200MT/s
3600MT/s
- ▶ **HEATSINK COLOR**
BLACK
WHITE
- ▶ **DIMENSIONS (L X W X H)**
133.35 x 36 x 6.6 mm

SPECTRIX D50

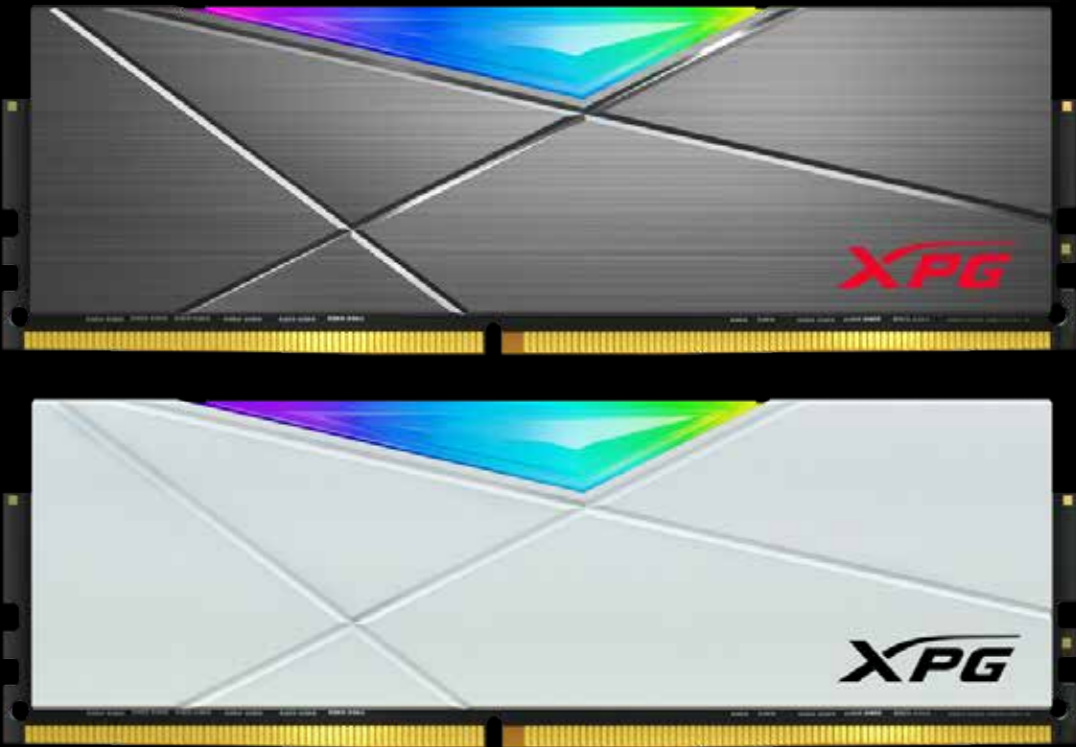
THE NEED FOR SPEED



EXCELLENT DURABILITY
SOLID CONSTRUCTION

CUSTOMIZABLE
RGB LIGHTING

EASY OVERCLOCKING
SUPPORTS XMP 2.0



- ▶ CAPACITY
8GB/16GB/32GB
- ▶ SPEED
3200MT/s
3600MT/s
4133MT/s
- ▶ HEATSINK COLOR
TUNGSTEN GREY
WHITE
- ▶ DIMENSIONS (L X W X H)
133.35 X 43.56 X 8 mm

SPECTRIX D45G

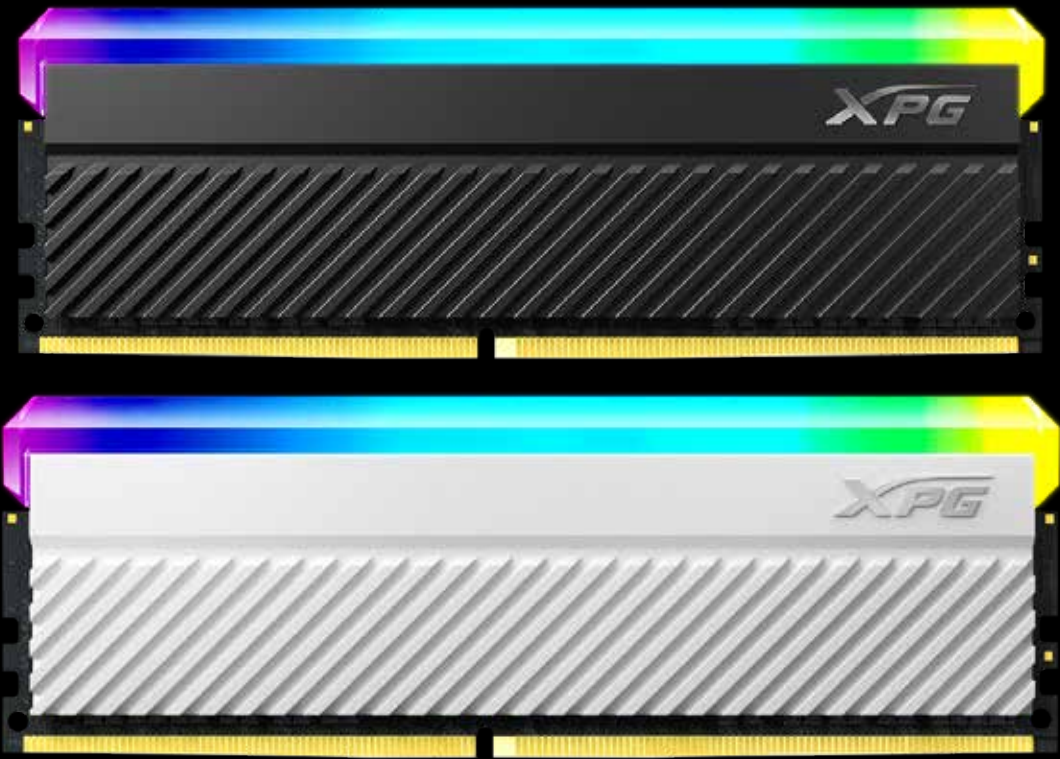
BLACK & BRILLIANT



STYLISH
HEATSINK WITH RUGGED RIDGES

CUSTOMIZABLE
RGB LIGHTING

EASY OVERCLOCKING
SUPPORTS XMP 2.0



- ▶ **CAPACITY**
8GB/16GB/32GB
- ▶ **SPEED**
3200MT/s
3600MT/s
- ▶ **HEATSINK COLOR**
BLACK
WHITE
- ▶ **DIMENSIONS (L X W X H)**
133.35 x 45.26 x 8.2 mm

SPECTRIX D41



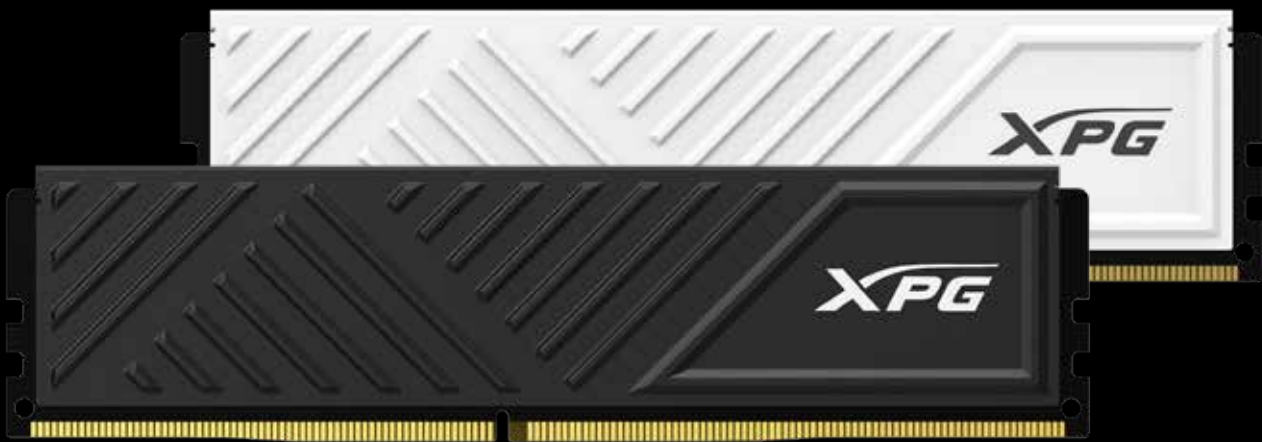
- CAPACITY
8GB / 16GB
- SPEED
3200 / 3600 MT/s
- HEATSINK COLOR
TUNGSTEN GREY
- DIMENSIONS (L X W X H)
133.35 x 45.8 x 8 mm

STYLISH
DIAMOND-CUT DESIGN

CUSTOMIZABLE
LARGE RGB SURFACE

EASY OVERCLOCKING
SUPPORTS XMP 2.0

GAMMIX D35



- CAPACITY
8GB / 16GB / 32GB
- SPEED
3200 / 3600 MT/s
- HEATSINK COLOR
BLACK / WHITE
- DIMENSIONS (L X W X H)
133.35 x 34 x 5.9 mm

COMPACT DESIGN
LOW-PROFILE HEATSINK

HIGH-QUALITY COMPONENTS

EASY OVERCLOCKING
SUPPORTS XMP 2.0

GAMMIX D45



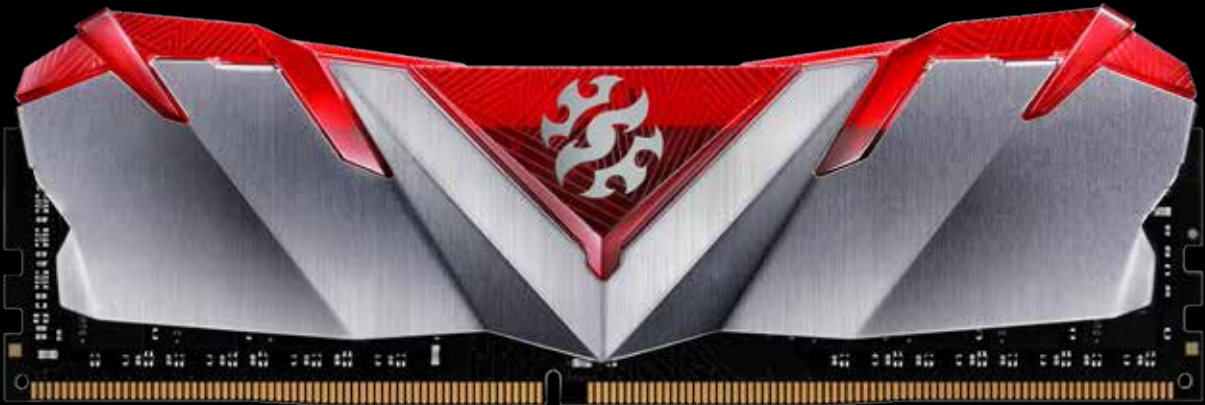
- CAPACITY
8GB / 16GB / 32GB
- SPEED
3200 / 3600 MT/s
- HEATSINK COLOR
BLACK / WHITE
- DIMENSIONS (L X W X H)
133.35 x 39.17 x 8.2 mm

STYLISH
HEATSINK WITH RUGGED RIDGES

HIGH-QUALITY COMPONENTS

EASY OVERCLOCKING
SUPPORTS XMP 2.0

GAMMIX D30



- CAPACITY
8GB / 16GB
- SPEED
3200 / 3600 MT/s
- DIMENSIONS (L X W X H)
133.35 x 44.7 x 8.1 mm

STYLISH
WING-SHAPED DESIGN

HIGH-QUALITY COMPONENTS

EASY OVERCLOCKING
SUPPORTS XMP 2.0

GAMMIX D20



- CAPACITY
8GB / 16GB / 32GB
- SPEED
3200 / 3600 MT/s
- HEATSINK COLOR
BLACK
- DIMENSIONS (L X W X H)
133.35 x 34 x 6.5 mm

STYLISH
SHADOW STEALTH DESIGN

HIGH-QUALITY COMPONENTS

EASY OVERCLOCKING
SUPPORTS XMP 2.0

GAMMIX D10



- CAPACITY
8GB / 16GB
- SPEED
3200 / 3600 MT/s
- HEATSINK COLOR
BLACK
- DIMENSIONS (L X W X H)
133.35 x 45.8 x 8 mm

STYLISH
UNIQUE-HEATSINK DESIGN

HIGH-QUALITY COMPONENTS

EASY OVERCLOCKING
SUPPORTS XMP 2.0

GAMMIX S55

POWERING IN YOUR HANDHELD

PCIe

4.0

NVMe

1.4

For Handhelds



HIGH SPEEDS
5,000 / 3,700MB/s (PC / LAPTOP)

EXPANDED STORAGE
FOR HANDHELDS

COMPATIBLE WITH
MINI LAPTOPS



- ▶ COMPLIES WITH
NVMe 1.4
- ▶ CAPACITY
512GB / 1TB / 2TB
- ▶ SEQUENTIAL READ (MAX.)
Up to 5,000MB/s (PC / LAPTOP)
- ▶ SEAMLESS PERFORMANCE
SLC CACHING AND HOST MEMORY BUFFER
- ▶ DIMENSIONS (L X W X H)
30 x 22 x 2.05 mm
- ▶ WEIGHT
2.7g
- ▶ WARRANTY
5-YEAR LIMITED



WORK WITH
PS5

*Check your console's manual or visit
www.adata.com for more on compatibility

Work with PS5

- ▶ Read speed up to 6,300MB/s for PS5

For Compact & Thin Devices

- ▶ Compatible with Intel® Evo™ laptops



GAMMIX S70 BLADE

SHARP AS A BLADE



HIGH SPEEDS

7,400 / 6,800MB/S(PC/LAPTOP)

EXPAND PS5 STORAGE

COMPATIBLE WITH

INTEL® EVO™ LAPTOPS



- ▶ COMPLIES WITH
NVMe 1.4
- ▶ CAPACITY
512GB / 1TB / 2TB / 4TB / 8,000GB
- ▶ SEQUENTIAL READ (MAX.)
Up to 6,300MB/s (PS5)
- ▶ 4K RANDOM SPEED (MAX.)
750K / 750K IOPS
- ▶ SEAMLESS PERFORMANCE
SLC CACHING AND DRAM CACHE BUFFER
- ▶ DIMENSIONS (L X W X H)
80 x 22 x 4.3 mm (W/ HEATSINK), 80 x 22 x 3.3 mm (W/O HEATSINK)
- ▶ WEIGHT
11g (W/ HEATSINK), 7g (W/O HEATSINK)
- ▶ WARRANTY
5-YEAR LIMITED

GAMMIX S60

PERFORMANCE FOR MODERN GAMING

PCIe
4.0

NVMe
1.4



HIGH SPEEDS

5,000 / 4,200MB/S(PC/LAPTOP)

EXPAND PS5 STORAGE

COMPATIBLE WITH THIN HOST DEVICES



- ▶ COMPLIES WITH
NVMe 1.4
- ▶ CAPACITY
512GB / 1TB / 2TB
- ▶ SEQUENTIAL READ (MAX.)
Up to 4,600MB/s (PS5)
- ▶ SEAMLESS PERFORMANCE
SLC CACHING AND HOST MEMORY BUFFER
- ▶ DIMENSIONS (L X W X H)
80 x 22 x 3.13 mm (W/ HEATSINK), 80 x 22 x 2.15 mm (W/O HEATSINK)
- ▶ WEIGHT
11g (W/ HEATSINK), 7g (W/O HEATSINK)
- ▶ WARRANTY
5-YEAR LIMITED

GAMMIX S50 CORE

UPGRADE YOUR GAME

PCIe
4.0

NVMe
1.4



HIGH SPEEDS

3,500 / 2,800MB/S (PC/LAPTOP)

ULTRA-FAST

PCIe GEN4 X4 INTERFACE

COMPATIBLE WITH

THIN HOST DEVICES



- COMPLIES WITH
NVMe 1.4
- CAPACITY
500GB / 1000GB / 2000GB
- SEQUENTIAL READ (MAX.)
Up to 3,500MB/s (PC / LAPTOP)
- SEAMLESS PERFORMANCE
SLC CACHING AND HOST MEMORY BUFFER
- DIMENSIONS (L X W X H)
80 x 22 x 2.65 MM (W/ HEATSINK), 80 x 22 x 2.15 MM (W/O HEATSINK)
- WEIGHT
10.3g (W/ HEATSINK), 6.3g (W/O HEATSINK)
- WARRANTY
3-YEAR LIMITED

SPECTRIX S20G

GO TO X-TREMES



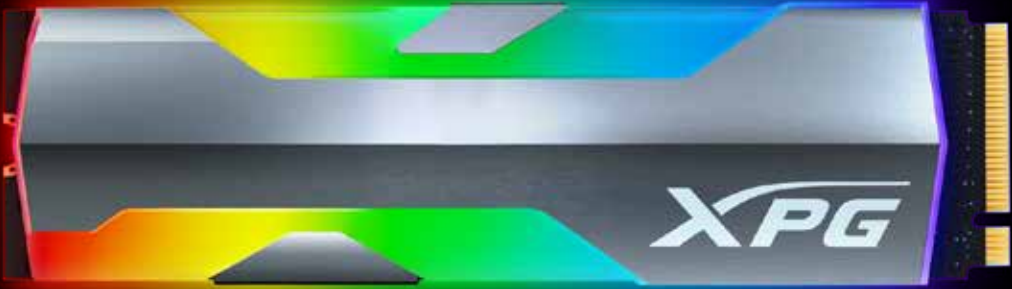
HIGH SPEEDS

2,500 / 1,800MB/S

PROMINENT

X-SHAPED RGB DESIGN

CUSTOMIZED RGB LIGHTING



- ▶ COMPLIES WITH
PCIe GEN3 x4 WITH NVMe 1.3
- ▶ CAPACITY
500GB / 1TB
- ▶ 4K RANDOM SPEED (MAX.)
160K / 190K IOPS
- ▶ SEAMLESS PERFORMANCE
SLC CACHING AND HMB (HOST MEMORY BUFFER)
- ▶ DIMENSIONS (L X W X H)
80 x 22.1 x 7.5 mm
- ▶ WEIGHT
15g
- ▶ WARRANTY
5-YEAR LIMITED

GAMMIX S11 PRO

REMAINS COOL AT
BLAZING SPEEDS



HIGH SPEEDS
3500MB/S

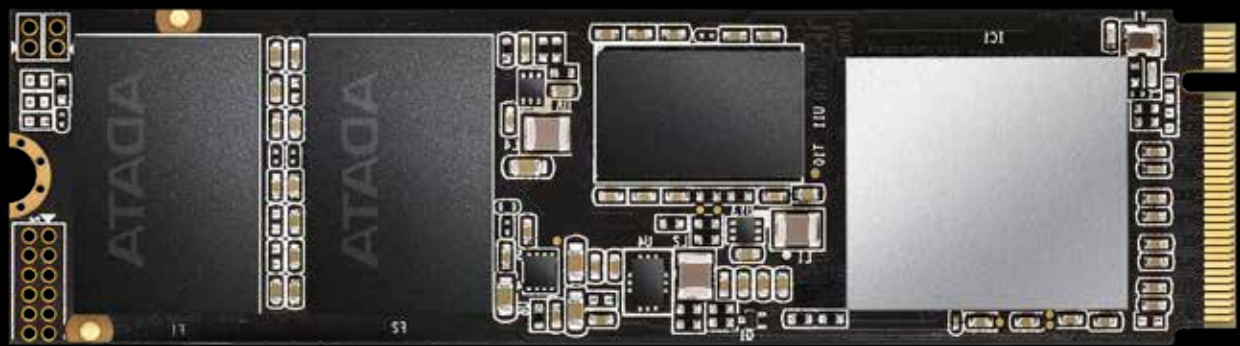
WRITE SPEED
3000MB/S

NAND FLASH
3D NAND



- ▶ UNIQUE HEATSINK
UP TO 10°C COOLER THAN OTHER SSDs
- ▶ CAPACITY
1TB
- ▶ 4K RANDOM SPEEDS
390K / 380K IOPS
- ▶ COMPLIES WITH
NVMe 1.3
- ▶ DIMENSIONS (L X W X H)
80 x 22 x 6.1 MM

SX8200 PRO



- ▶ CAPACITY
1TB
- ▶ 4K RANDOM SPEEDS
390K / 380K IOPS
- ▶ SEAMLESS PERFORMANCE
SLC CACHING AND DRAM CACHE BUFFER
- ▶ COMPLIES WITH
NVMe 1.3
- ▶ DIMENSIONS (L X W X H)
80 x 22 x 3.5 mm

READ SPEED
3500MB/S

WRITE SPEED
3000MB/S

NAND FLASH
3D NAND

FUSION 1600 TITANIUM

POWER SUPREMACY



XPG | DELTA
DESIGN COLLABORATION

CYBENETICS TITANIUM
CERTIFIED

ATX 3.0 & ATX 3.1 READY
2X 12VHPWR (12+4) CONNECTORS



- ▶ DESIGN COLLABORATION WITH DELTA
- ▶ TITANIUM CERTIFIED BY Cybenetics AND 80 PLUS
- ▶ PATENTED PLANAR TRANSFORMER AND GaN FET
- ▶ DIGITAL FUNCTIONALITY VIA XPG PRIME SOFTWARE
- ▶ OFFERS UP TO 2X 12VHPWR CONNECTORS
- ▶ OC LINK CAPABILITY TO COMBINE 2 FUSIONS, OFFERING A TOTAL OF 3200 WATTS OF POWER
- ▶ 135MM DOUBLE BALL BEARING FAN
- ▶ 8 INDUSTRIAL PROTECTIONS
- ▶ 100% JAPANESE CAPACITORS AT 105°C GRADE

CYBERCORE II PLATINUM

BETTER THAN ULTIMATE



Cybenetics PLATINUM
CERTIFIED

ATX 3.0 & ATX 3.1 READY
12VHPWR (12+4) CONNECTOR

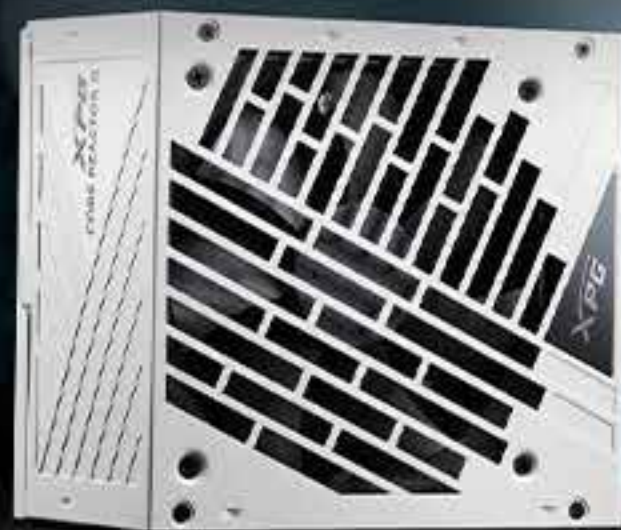
XPG VENTO PRO 120 PWM
By Nidec



- ▶ TWO WATTAGE OPTIONS: 1000W & 1300W
- ▶ CYBENETICS LAMBDA: A- RATING
- ▶ XPG & Nidec COLLABORATION
- ▶ ALL JAPANESE 105°C-GRADE CAPACITORS
- ▶ DIGITAL CONTROL PANEL
- ▶ DC-DC CIRCUIT DESIGN
- ▶ INTERLEAVED PFC
- ▶ 8 INDUSTRIAL PROTECTIONS
- ▶ 10-YEAR WARRANTY

CORE REACTOR II

IMPROVE YOUR CORE,
ENHANCE YOUR PERFORMANCE



ATX 3.0 & ATX 3.1 READY

12VHPWR (600W) CONNECTOR

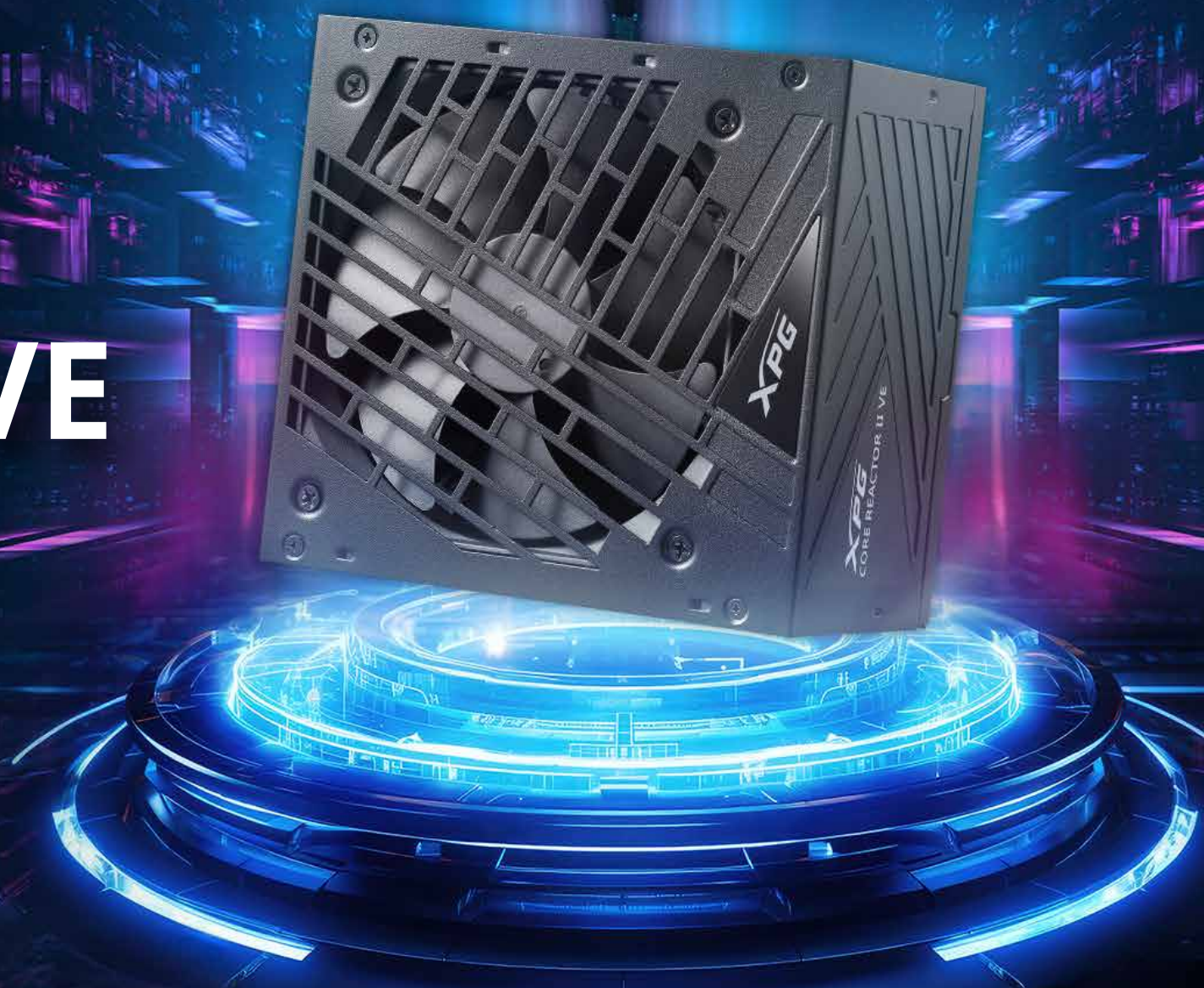
FULLY MODULAR DESIGN



- ▶ TWO WATTAGE OPTIONS: 1000W & 1300W
- ▶ CYBENETICS LAMBDA: A- RATING
- ▶ XPG & Nidec COLLABORATION
- ▶ ALL JAPANESE 105°C-GRADE CAPACITORS
- ▶ DIGITAL CONTROL PANEL
- ▶ DC-DC CIRCUIT DESIGN
- ▶ INTERLEAVED PFC
- ▶ 8 INDUSTRIAL PROTECTIONS
- ▶ 10-YEAR WARRANTY

CORE REACTOR II VE

IMPROVE YOUR CORE,
ENHANCE YOUR PERFORMANCE



ATX 3.1 COMPLIANT

12V-2X6 CONNECTOR

LOW RIPPLE NOISE DESIGN



- TWO WATTAGE OPTIONS: 650W / 750W / 850W
- CYBENETICS LAMBDA: A- RATING
- DC-DC CIRCUIT DESIGN
- COMPACT 140MM LENGTH DESIGN
- 8 INDUSTRIAL PROTECTIONS
- BACKED UP BY A 7-YEAR WARRANTY

KYBER

GO FOR GOLD



ATX 3.1 READY

12VHPWR (600W) CONNECTOR

PREMIUM CAPACITORS



- ▶ ATX 3.1 COMPLIANT
- ▶ AVAILABLE IN 650W, 750W, AND 850W MODELS
- ▶ INTELLIGENT FAN-CURVE DESIGN
- ▶ 105°C-GRADE CAPACITORS

12VHPWR CABLE

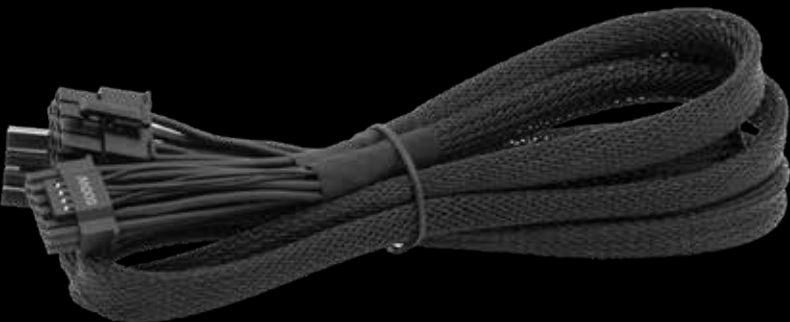
Unleash Your Power



EXQUISITE CABLE SLEEVE

12VHPWR (600W) CONNECTOR

650MM LENGTH



- ▶ COMPATIBLE WITH HIGH-PERFORMANCE NVIDIA RTX 40 SERIES GRAPHICS CARDS WITH A 12V HIGH POWER (600W) CONNECTOR.
- ▶ PROVIDES A USER-FRIENDLY EXPERIENCE COMPARABLE TO A SINGLE, TRADITIONAL CABLE.
- ▶ COMPATIBLE WITH XPG CYBERCORE AND XPG CORE REACTOR POWER SUPPLY UNITS.

PROBE

VIABLE, APPLIABLE, &
RELIABLE



80 PLUS BRONZE EFFICIENCY

ATX V2.52 STANDARDS COMPLIANCE

COMPACT 140MM LENGTH
FOR EASY INSTALLATION

- ▶ AVAILABLE IN 600W AND 700W MODELS
- ▶ CERTIFIED 80 PLUS BRONZE EFFICIENCY
- ▶ COMPLIANT WITH ATX V2.52 STANDARDS,
WITH AN ARRAY OF COMPREHENSIVE CONNECTORS
- ▶ COMPACT 140MM LENGTH DESIGN ENSURES EASIER INSTALLATION
WITH MAINSTREAM PC CASES
- ▶ 6 INDUSTRIAL PROTECTIONS WITH A 3-YEAR WARRANTY



PYLON

RAW ENERGY



DC-TO-DC CIRCUIT
STABLE POWER DELIVERY

JAPANESE MAIN
CAPACITOR

120MM FDB
SILENT-PERFORMANCE FAN



- ▶ 750W, 650W, 550W,
- ▶ 80 PLUS BRONZE
- ▶ CONTINUOUS POWER FOR 24/7 SYSTEM OPERATION
- ▶ 120MM FDB SILENT-PERFORMANCE FAN
- ▶ HIGH CURRENT +12V RAIL SYSTEM COMPATIBILITY
- ▶ JAPANESE MAIN CAPACITOR
- ▶ INDUSTRIAL-LEVEL PROTECTION
- ▶ 5-YEAR WARRANTY

INVADER X MINI

MINI CASE, MAX VIEW



COMPACT DIMENSIONS

PANAROMIC VIEW CASE

SUPPORTS
UP TO
ATX MOTHERBOARDS



- ▶ SLEEK DESIGN WITH TRANSPARENT PANELS
- ▶ COMES WITH 5 ARGB FANS, INCLUDING 4 REVERSE FANS AND ONE REGULAR FAN FOR EFFICIENT AIRFLOW. (INVADERXMINIMT)
- ▶ TOOLLESS, REMOVABLE FRONT PANEL AND TOP & BOTTOM DUST FILTERS FOR QUICK ACCESS AND EASY MAINTENANCE
- ▶ SUPPORTS UP TO ATX MOTHERBOARDS, 330MM GPUS, AND FLEXIBLE STORAGE WITH A REMOVABLE BRACKET
- ▶ ACCOMMODATES A 166MM HEIGHT CPU COOLER OR A 240MM RADIATOR FOR HIGH-PERFORMANCE COOLING

INVADER X BTF

BUILT FOR THE FUTURE



**SUPPORTS
REVERSE-CONNECTOR
MOTHERBOARDS**

**SUPPORTS
UP TO
ATX MOTHERBOARDS**

**SUPPORTS
VERTICAL OR HORIZONTAL
GPU INSTALLATION**



- PANORAMIC VIEW WITH 3MM TEMPERED-GLASS
- SUPPORTS ATX / M-ATX / MINI-ITX MOTHERBOARD, INCLUDING THE LATEST REVERSE-CONNECTOR MOTHERBOARD
- SUPPORTS UP TO TEN 120MM FANS
- PRE-INSTALLED FOUR 120MM REVERSED BLADE FANS PLUS ONE 120MM STANDARD FAN
- SUPPORTS VERTICAL OR HORIZONTAL GPU MOUNTING UP TO 400MM IN LENGTH

INVADER X

DOMINATE FROM EVERY PERSPECTIVE



**SUPPORTS BTM
MOTHERBOARDS**

**SUPPORTS UP TO
10X 120MM FANS**

**VERTICAL OR HORIZONTAL
GPU INSTALLATION
UP TO 400MM IN LENGTH**



- PANORAMIC VIEW 3MM TEMPERED-GLASS
- SUPPORTS UP TO 10X 120MM FANS
- ATX FORM FACTOR 460 X 210 X 371 MM (18.10 X 8.28 X 14.60 INCH)
- SUPPORTS ATX / MATX / MINI-ITX MOTHERBOARDS
- 36MM ADDITIONAL SPACE FOR EASY CABLE MANAGEMENT
- 4X 120MM PRE-INSTALLED REVERSE BLADE FANS + 1X 120MM REGULAR FAN FOR CERTAIN MODELS

BATTLECRUISER II

ENHANCED FOR THE ULTIMATE GAMER



**420MM RADIATOR
FRONT INSTALLATION**

**XPG PRIME BOX
FOR ARGB SYNC**

E-ATX COMPATIBLE
550 X 225 X 506 MM



- METAL CONSTRUCTION WITH 4 TEMPERED-GLASS PANELS
- SUPPORTS UP TO 7X 120MM FANS
- SUPPORTS UP TO 360MM RADIATOR (TOP) AND 420MM RADIATOR (FRONT)
- SUPPORTS E-ATX / ATX / MATX / MINI-ITX MOTHERBOARDS
- ADJUSTABLE GPU HOLDER (52-134 MM IN HEIGHT)
- COMES WITH XPG PRIME BOX ARGB SYNCHRONIZATION (CERTAIN MODELS)

VALOR AIR PLUS

ENDLESS POSSIBILITIES



**HIGH-AIRFLOW
MAGNETIC FRONT PANEL**

**SUPPORTS UP TO
ATX MOTHERBOARDS**

**GRAPHICS CARDS SUPPORT
UP TO 340MM LONG**



- HIGH-AIRFLOW MAGNETIC FRONT PANEL DESIGN PROVIDES EXCELLENT AIRFLOW TO YOUR SYSTEM
- SUPPORTS MINI-ITX, MICRO-ATX, AND ATX MOTHERBOARDS
- SUPPORTS COOLING CONFIGURATIONS WITH UP TO 6X 120MM FANS AND A 360MM RADIATOR
- SUPPORTS GRAPHICS CARDS UP TO 340MM LONG, ACCOMMODATING MOST OF THE RTX 40 SERIES
- UP TO 4X PRE-INSTALLED 120MM ARGB DAISY-CHAINED FANS (DEPENDING ON THE MODEL)
- SUPPORTS UP TO 3X 2.5" SSD OR 2X 3.5" HDD WITH A REMOVABLE HDD TRAY
- REMOVABLE DUST FILTERS INCLUDED

VALOR STORM

ENDLESS POSSIBILITIES



2 COLOR DESIGNS
BLACK & WHITE

120MM X4 FANS
PRE-INSTALLED

COMPACT DIMENSIONS
GREAT COMPATIBILITY



- ▶ STREAMLINE-CARVING FRONT PANEL DESIGN
- ▶ MAGNETIC DETACHABLE STEEL FRONT PANEL
- ▶ ATX FORM FACTOR 460 X 210 X 371 MM (18.10 X 8.28 X 14.60 INCH)
- ▶ X4 PRE-INSTALLED 120MM FANS
- ▶ CPU COOLER HEIGHT: UP TO 166MM
- ▶ GRAPHICS CARD LENGTH: UP TO 335MM
- ▶ PSU LENGTH: UP TO 180MM (160MM WITH HDD/SSD TRAY)

VALOR MESH

SMALL SIZE, INFINITE OPTIONS



2 COLOR DESIGNS
BLACK & WHITE

120MM X4 FANS
PRE-INSTALLED

COMPACT DIMENSIONS
GREAT COMPATIBILITY



- MESH FRONT PANEL DESIGN
- MAGNETIC DETACHABLE STEEL FRONT PANEL
- ATX FORM FACTOR 460 X 210 X 371 MM (18.10 X 8.28 X 14.60 INCH)
- X4 PRE-INSTALLED 120MM FANS
- CPU COOLER HEIGHT: UP TO 166MM
- GRAPHICS CARD LENGTH: UP TO 335MM
- PSU LENGTH: UP TO 180MM (160MM WITH HDD/SSD TRAY)

VALOR AIR

ENDLESS POSSIBILITIES

2 COLOR DESIGNS

BLACK & WHITE

120MM X4 FANS

PRE-INSTALLED

COMPACT DIMENSIONS

GREAT COMPATIBILITY



- ▶ STREAMLINE-CARVING FRONT PANEL DESIGN
- ▶ MAGNETIC DETACHABLE STEEL FRONT PANEL
- ▶ ATX FORM FACTOR 460 X 210 X 371 MM (18.10 X 8.28 X 14.60 INCH)
- ▶ X4 PRE-INSTALLED 120MM FANS
- ▶ CPU COOLER HEIGHT: UP TO 166MM
- ▶ GRAPHICS CARD LENGTH: UP TO 335MM
- ▶ PSU LENGTH: UP TO 180MM (160MM WITH HDD/SSD TRAY)

DEFENDER PRO

TOWER DEFENSE



DETACHABLE FRONT PANEL
MAGNETIC ARGB STRIP

PREMIUM E-ATX
FORM FACTOR

3 INCLUDED
XPG VENTO 120 ARGB FANS



- E-ATX COMPATIBLE
- MAGNETIC MESH FRONT PANEL WITH ARGB STRIPS
- REMOVABLE DUST FILTER
- XPG PRIME™ ARGB COMBO CONTROLLER
- EFFICIENT AIRFLOW LAYOUT
- X3 INCLUDED XPG VENTO 120MM ARGB FANS
- 3MM TEMPERED GLASS SIDE PANEL
- SUPPORTS VERTICAL AND HORIZONTAL GPU INSTALLATION
- 22.8MM DEPTH FOR CABLE MANAGEMENT

STARKER AIR

GO WITH AIRFLOW



**MAGNETIC DETACHABLE
FRONT PANEL**
FRONT PANEL MESH DESIGN

EASY TO DETACH AND CLEAN
REMOVABLE-ON-RAIL DUST FILTER

**X2 PRE-INSTALLED
XPG VENTO 120 FANS**
EFFICIENT AIRFLOW LAYOUT



- MAGNETIC MESH FRONT PANEL
- EFFICIENT AIRFLOW LAYOUT
- INNOVATIVE REMOVABLE-ON-RAIL DUST FILTER
- FRONT PANEL ARGB ELEMENTS WITH INTEGRATED LIGHTING EFFECTS
- SUPPORTS VERTICAL GPU INSTALLATION

VENTO R 120 ARGB PWM

BE AWESOME



DAISY CHAIN
SYCHRNIZATION

QUIELY COOL
65.33 CFM AIRFLOW

REVERSE FAN DESIGN
MAXIMIZING AIRFLOW



- REVERSE FAN DESIGN
- 4-PIN PWM CONNECTOR DESIGN
- DAISY-CHAIN CAPABLE, ARGB SOFTWARE COMPATIBLE
- EFFICIENCY COOLING PERFORMANCE
- AVAILABLE IN BOTH SINGLE PACK AND TRIPLE PACK OPTIONS

VENTO 120 ARGB PWM

FEEL THE FORCE



DAISY CHAIN
SYCHRNIZATION

QUIELY COOL
50.27 CFM AIRFLOW

REVERSE BEARING
NOISE RED, LIFESPAN INCREASED



- 4-PIN PWM CONNECTOR DESIGN
- DAISY-CHAIN CAPABLE
- EFFICIENCY COOLING PERFORMANCE
- AVAILABLE IN BOTH SINGLE PACK AND TRIPLE PACK OPTIONS
- ARGB SOFTWARE COMPATIBLE

HURRICANE 120/140ARGB PWM

FEEL THE FORCE



DUAL-RING

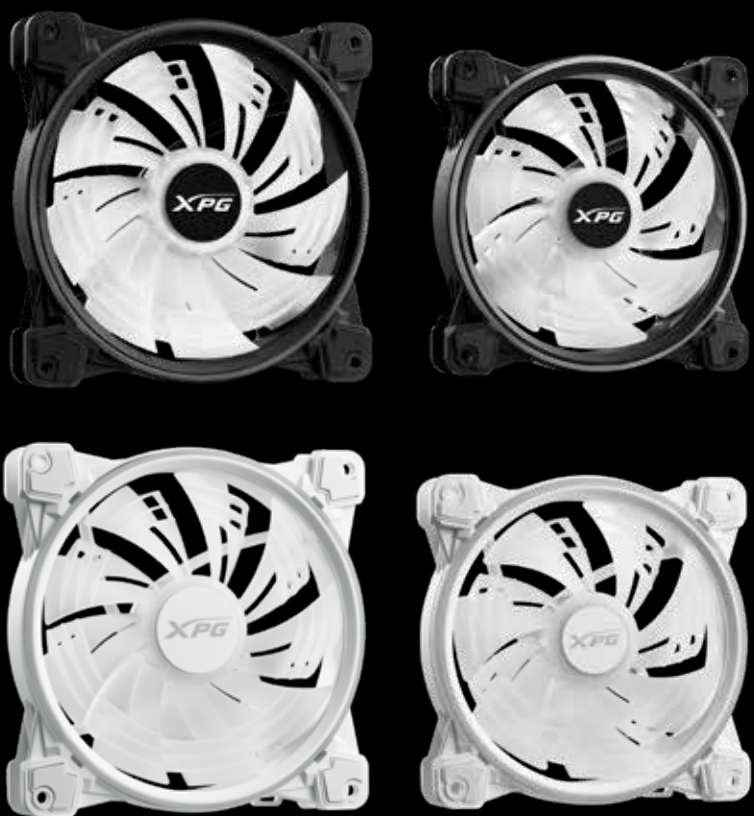
ARGB LIGHTING EFFECTS

4-PIN PWM

DAISY-CHAIN CAPABLE

HIGH COOLING PERFORMANCE

AIRFLOW & STATIC PRESSURE



- AVAILABLE IN BLACK AND WHITE MODELS
- FLUID DYNAMIC BEARING (FDB)
- PATENTED FAN BLADE DESIGN
- 4-PIN PWM CONNECTOR
- SILENT FAN OPERATION

VENTO 120 PRO PWM

BE AWESOME



PATENTED NIDEC DESIGN
QUIET COOLING SOLUTION

4-PIN PWM
CONNECTOR TYPE

DUAL BALL BEARING
HIGH THERMAL TOLERANCE



- GENTLE TYPHOON PATENTED NIDEC DESIGN
- 4-PIN PWM CONNECTOR AND DAISY CHAIN CAPABILITY
- DUAL BALL BEARING
- HIGH STATIC PRESSURE 3.15MM H₂O
- HIGH AIRFLOW 75 CFM
- INNOVATIVE FAN MOTOR, PROPELLER, AND SICKLE FAN BLADES DESIGNED BY NIDEC
- HIGH THERMAL ENDURANCE: 250,000 HOURS AT 25°C, 60,000 HOURS AT 60°C
- 5-YEAR WARRANTY



Innovative Fan Blade Design

- Innovative fan propeller
- Reduced vibration and noise
- High Static Pressure, High Airflow

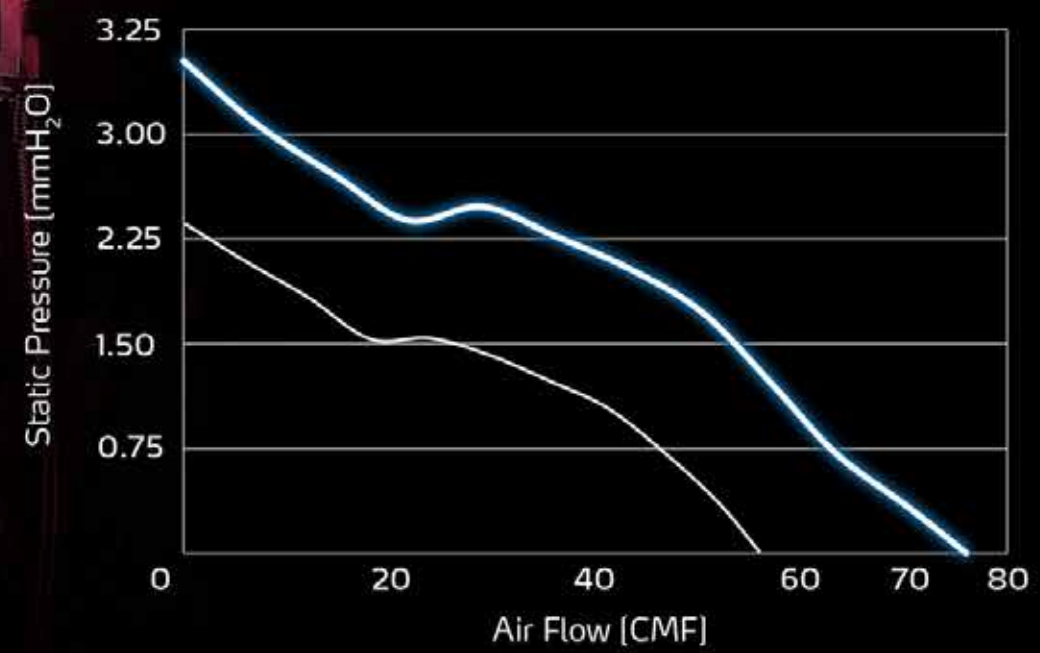
DUAL BEARINGS

- Japanese Precision Bearings
- Greater Efficiency and Stability
- Long Lifespan



— XPG VENTO PRO 120 PWM (2150 RPM)

— Other Brand (2150 RPM)



- 250,000 hours at 25°C
- 60,000 hours at 60°C



PRIME BOX

PRIME YOUR UNIVERSE



4 PWM PORT
PRECISION PWM CONTROL

SUPPORT PRIME SOFTWARE
RGB LIGHTING CUSTOMIZATION

EMBEDDED MAGNET DESIGN
EASY INSTALLATION



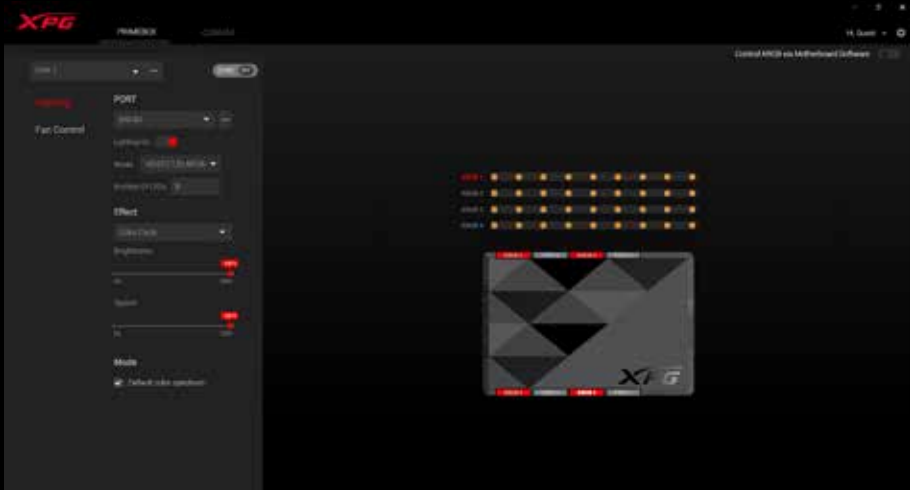
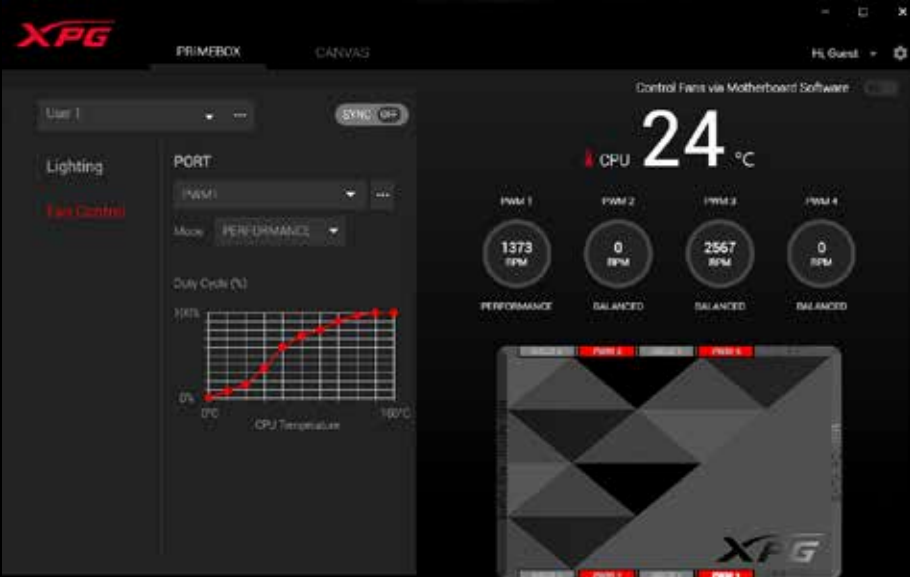
- 4 PWM CONTROL PORTS SUPPORT PRECISE PWM CONTROL
- EACH ARGB PORT SUPPORTS UP TO 80 LEDS
- ULTIMATE CUSTOMIZATION VIA XPG PRIME™ SOFTWARE
- BUILT-IN MAGNET FOR EASY INSTALLATION
- COMPACT SIZE: 100 X 68.24 X 18MM



XPG PRIME SOFTWARE

Enjoy unlimited RGB customization and synchronized lighting across all of your compatible XPG peripherals, components, and memory modules.

<https://prime.xpg.com/>



XENIA 15G

RULE YOUR DOMAIN



GAMING-READY CPU

14TH GEN INTEL® CORE™
I7-14700HX PROCESSOR

REVOLUTIONARY GRAPHICS

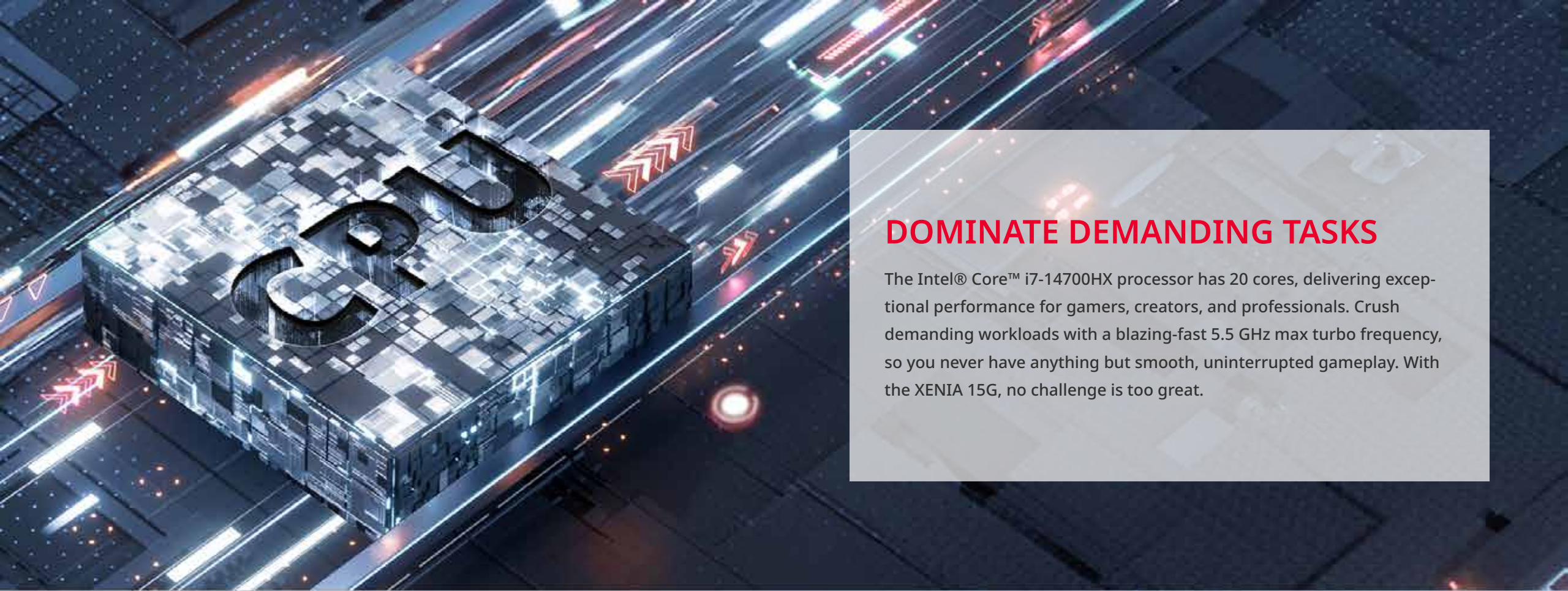
NVIDIA® GEFORCE RTX™ 4070
NVIDIA® GEFORCE RTX™ 4060

MUX SWITCH DESIGN

UNCOMPROMISED GAMING
PERFORMANCE



- ▶ 14TH GEN INTEL® CORE™ I7-14700HX PROCESSOR
- ▶ UP TO NAVIDIA® GEFORCE RTX™ 4070 LAPTOP GPU
- ▶ UP TO 16GB (8GB X 2) ADATA DDR5 5600 MEMORY SO-DIMM
- ▶ 1 TB ADATA LEGEND 850 PCIE GEN 4X4 SSD
- ▶ 15.6" FHD, 144HZ IPS PANEL



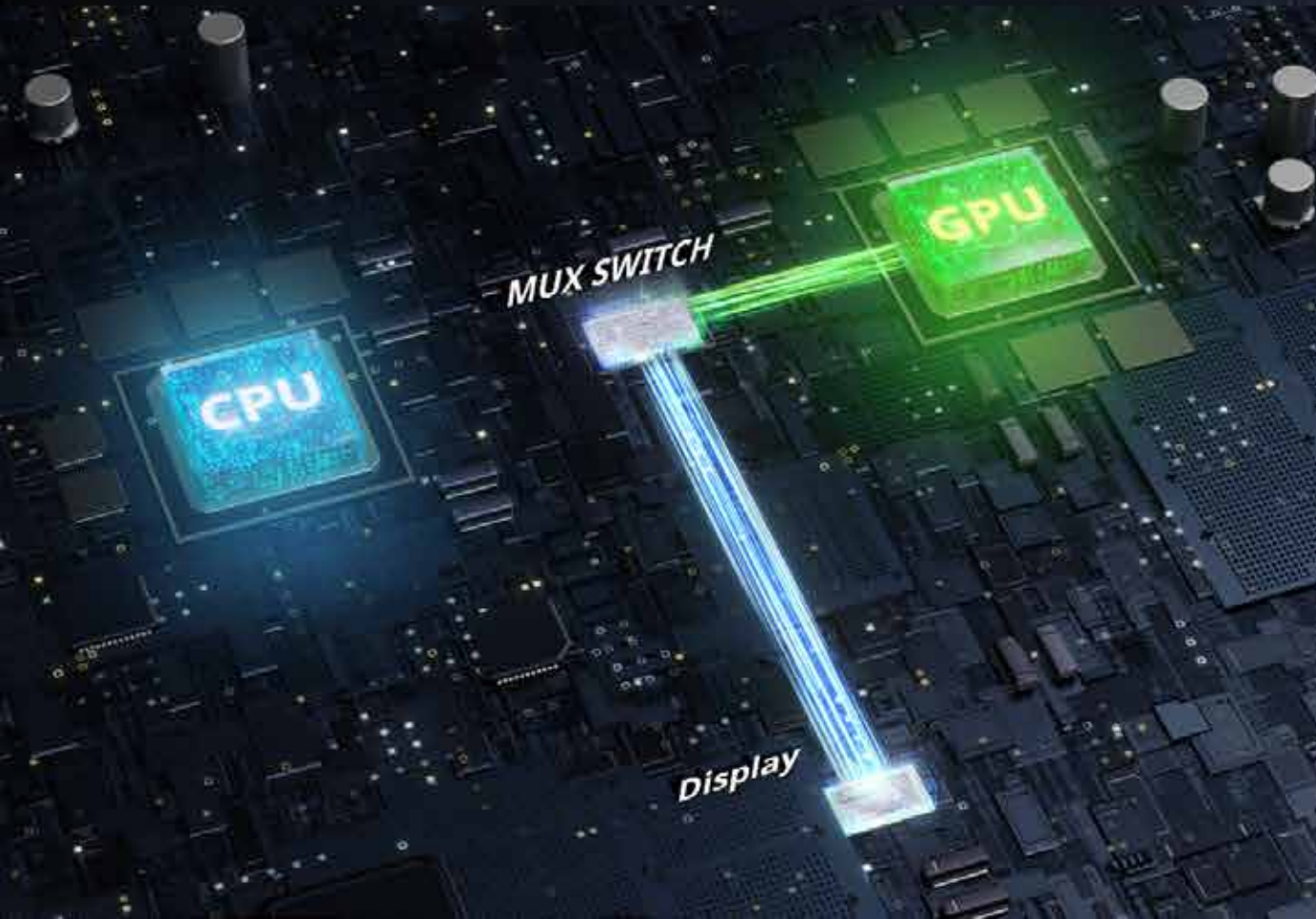
DOMINATE DEMANDING TASKS

The Intel® Core™ i7-14700HX processor has 20 cores, delivering exceptional performance for gamers, creators, and professionals. Crush demanding workloads with a blazing-fast 5.5 GHz max turbo frequency, so you never have anything but smooth, uninterrupted gameplay. With the XENIA 15G, no challenge is too great.



BEYOND FAST

The GeForce RTX™ 40 Series laptop GPU leverages NVIDIA®'s Ada Lovelace architecture, delivering a quantum leap in performance with AI-powered DLSS 3 and full ray tracing for the latest games. Plus, the Max-Q suite of technologies optimizes system performance, power, battery life, and acoustics for peak efficiency. It's the perfect laptop for gamers and creators that have a need to work and play with speed.



UNCOMPROMISED GAMING

The new XENIA 15G features a MUX switch that allows you to switch between NVIDIA Optimus Hybrid Mode and Discrete Graphics Mode, bypassing the integrated graphics and sending frames directly to the display. This unlocks higher frame rates, smoother gameplay, and reduced latency, offering you an unparalleled gaming experience in even the most intense sessions.



ALPHA WIRELESS

UNTETHERED XTREME



AWARD-WINNING
ERGONOMIC DESIGN

:EXOSKELETON
DESIGN LANGUAGE

XPG PRIME SOFTWARE
GAMING CUSTOMIZATION



- ▶ 2022 RED DOT DESIGN AWARD WINNER
- ▶ :EXOSKELETON DESIGN LANGUAGE
- ▶ ERGONOMIC DESIGN
- ▶ CUSTOMIZE LIGHTING AND PERFORMANCE WITH XPG PRIME™ SOFTWARE
- ▶ MULTIPLE CONNECTIVITY OPTIONS
- ▶ LONG BATTERY LIFE
- ▶ PIXART PAW 3335 SENSOR
- ▶ PREMIUM OMRON SWITCHES
- ▶ 2-YEAR WARRANTY



ALPHA

EXTEND YOUR GAMING FIELD



AWARD-WINNING
ERGONOMIC DESIGN

:EXOSKELETON
DESIGN LANGUAGE

XPG PRIME SOFTWARE
GAMING CUSTOMIZATION



- ▶ 2022 RED DOT DESIGN AWARD WINNER
- ▶ :EXOSKELETON DESIGN LANGUAGE
- ▶ ERGONOMIC DESIGN
- ▶ CUSTOMIZE LIGHTING AND PERFORMANCE WITH XPG PRIME™ SOFTWARE
- ▶ PIXART PAW 3335 SENSOR
- ▶ PREMIUM OMRON SWITCHES
- ▶ 2-YEAR WARRANTY

PRECOG STUDIO

Immerse | Amplify | Slay



THE WORLD'S FIRST
BALANCED GAMING HEADSET

4.4MM CONNECTOR
ZERO-CROSSTALK CIRCUIT DESIGN

USB-C DAC
SUPERIOR ESS AUDIO CHIPSET



- ▶ THE WORLD'S FIRST BALANCED GAMING HEADSET, PROVIDING THE ULTIMATE AUDIO EXPERIENCE.
- ▶ BALANCED DESIGN WITH A 4.4MM CONNECTOR FOR TOTAL CHANNEL SEPARATION AND REDUCED CROSSTALK.
- ▶ USB-C DAC WITH AN ESS AUDIO CHIPSET FOR DEVICE COMPATIBILITY AND FLAWLESS AUDIO FIDELITY.
- ▶ LARGE 50MM DRIVERS FOR A MORE IMMERSIVE AND REALISTIC AUDIO EXPERIENCE.
- ▶ 100HZ-8000HZ MICROPHONE FREQUENCY RANGE, TAILORED FOR CAPTURING CLEAR VOICE COMMUNICATION.

PRECOG S

IMMERSIVE AUDIO



SUPERB 50MM DRIVER
SOUND QUALITY

HIGH SENSITIVITY
OMNIDIRECTIONAL MICROPHONE

LIGHTWEIGHT
ONLY 300G



- ▶ AUTO ADJUSTABLE HEADBAND
- ▶ ROTATABLE EAR CUPS
- ▶ ON-EAR VOLUME CONTROL & MUTE SWITCH
- ▶ MICROPHONE FREQUENCY RANGE 100-8,000HZ
- ▶ IMMERSIVE AUDIO
- ▶ 3.5MM CONNECTOR
- ▶ Y-CABLE ACCESSORY
- ▶ SPATIAL 3D AUDIO SUPPORT VIA WINDOWS SONIC
- ▶ 2-YEAR WARRANTY



SORCERER

SPELL IT OUT



GASKET MOUNT DESIGN
TRIPLE-LAYERED DAMPENING FOAM

XPG RED SWITCH
SMOOTH TYPING EXPERIENCE

96% FORM FACTOR
COMPACT DESIGN



- HOT-SWAPPABLE SWITCH DESIGN
- PER-KEY RGB LIGHTING CUSTOMIZATION, SUPPORTED BY XPG PRIME SOFTWARE.
- DETACHABLE USB-C CABLE.
- 3-LEVEL ADJUSTABLE HEIGHT ERGONOMIC DESIGN.

SORCERER MINI

SPELL IT



GASKET MOUNT DESIGN
TRIPLE-LAYERED DAMPENING FOAM

XPG RED SWITCH
SMOOTH TYPING EXPERIENCE

65% FORM FACTOR
ULTRA PORTABLE



- HOT-SWAPPABLE SWITCH DESIGN
- PER-KEY RGB LIGHTING CUSTOMIZATION, SUPPORTED BY XPG PRIME SOFTWARE.
- DETACHABLE USB-C CABLE.
- 3-LEVEL ADJUSTABLE HEIGHT ERGONOMIC DESIGN.

FRONTLINE XL

GLIDE | GRIP | DOMINATE



PRECRISE CONTROL
MICROFIBER SURFACE

900 X 400 (MM)
LARGE SURFACE AREA

STABLE GRIP
ANTI-SLIP RUBBER BASE



- ▶ SMOOTH MICROFIBER SURFACE FOR PRECISE CONTROL.
- ▶ XL SIZE PROVIDES AMPLE SPACE FOR ALL YOUR GEAR.
- ▶ ANTI SLIP RUBBER BASE KEEPS YOU IN CONTROL DURING INTENSE GAMEPLAY.
- ▶ CONSISTENT TRACKING EVEN AFTER ROLLING AND UNROLLING.
- ▶ DURABLE STITCHING PREVENTS FRAYING.

FRONTLINE XL SAGA SERIES

XTREME GAMING



XTREME SAGA DESIGNS
SAME XTREME PERFORMANCE

900 X 400 (MM)
LARGE SURFACE AREA

STABLE GRIP
ANTI-SLIP RUBBER BASE



- ▶ SMOOTH MICROFIBER SURFACE FOR PRECISE CONTROL.
- ▶ XL SIZE PROVIDES AMPLE SPACE FOR ALL YOUR GEAR.
- ▶ ANTI SLIP RUBBER BASE KEEPS YOU IN CONTROL DURING INTENSE GAMEPLAY.
- ▶ CONSISTENT TRACKING EVEN AFTER ROLLING AND UNROLLING.
- ▶ DURABLE STITCHING PREVENTS FRAYING.



Headquarters

ADATA Technology Co., Ltd.
Taipei
T: +886-2-8228-0886
E: adata@adata.com

Asia

Beijing, China
T: +86-10-8289-9532
E: adata_bj@adata.com

Hong Kong, China
T: +852-2127-7072
E: adata_hk@adata.com

Shanghai, China
T: +86-21-6233-1010
E: adata_sh@adata.com

Tokyo, Japan
T: +81-3-5807-0011
E: adata_jp@adata.com
E: IASales_jp@adata.com

Shenzhen, China
T: +86-755-8882-3637
E: adata_sz@adata.com

Delhi, India
T: +91-11-44731886
E: adata_delhi@adata.com

Americas

Los Angeles, USA
T: +1-714-332-8708
E: adata_usa@adata.com
E: IASales_us@adata.com

Mexico City, Mexico
T: +52-55-5543-7427
E: mexico@adata.com

Miami, USA
T: +1-786-536-2128
E: adata_latin@adata.com

Santo Antonio de Posse, Brazil
T: +55-19-3199-0886
E: adata_br@adata.com

Europe

Hoofddorp, Netherlands
T: +31-23-5689203
E: adata_europe@adata.com

Munich, Germany
T: +49-899-0405-296
E: IASales_eu@adata.com

Cologne, Germany
T: +49-221-65-080-4093
E: adata_europe@adata.com

Manufacturing Facilities

Suzhou, China
T: +86-512-6593-0886
E: adata@adata.com

São Paulo, Brazil
T: +55-19-3199-0886
E: adata_br@adata.com

Manaus, Brazil
T: +55-92-2125-9090
E: adata_br@adata.com



WWW.XPG.COM

Copyright 2023 by ADATA Technology Co., Ltd. All rights reserved.
All brand names are registered trademarks of their respective owners.