



ADATA SU650 FW Update Guide



Reminder

The firmware update tool will **erase** the data from SSD, please backup your SSD before perform the firmware update.

This FW update is for SU650 with V8X01c86, and V8X01c87.




ADATA SU650 FW Update SOP

Step1. :

Make sure the BIOS setting is “AHCI mode” before start to update the firmware.

Double click firmware update tool for firmware update.

Name	Date modified	Type	Size
 SSDFWUpdate_ISP.exe	11/27/2020 4:15 PM	Application	5,043 KB



ADATA SU650 FW Update SOP

Step2. :

Open the firmware update tool, then it will detect the SSD drive from PC.

If update tool couldn't found the SSD drive, please click search button as red mark.

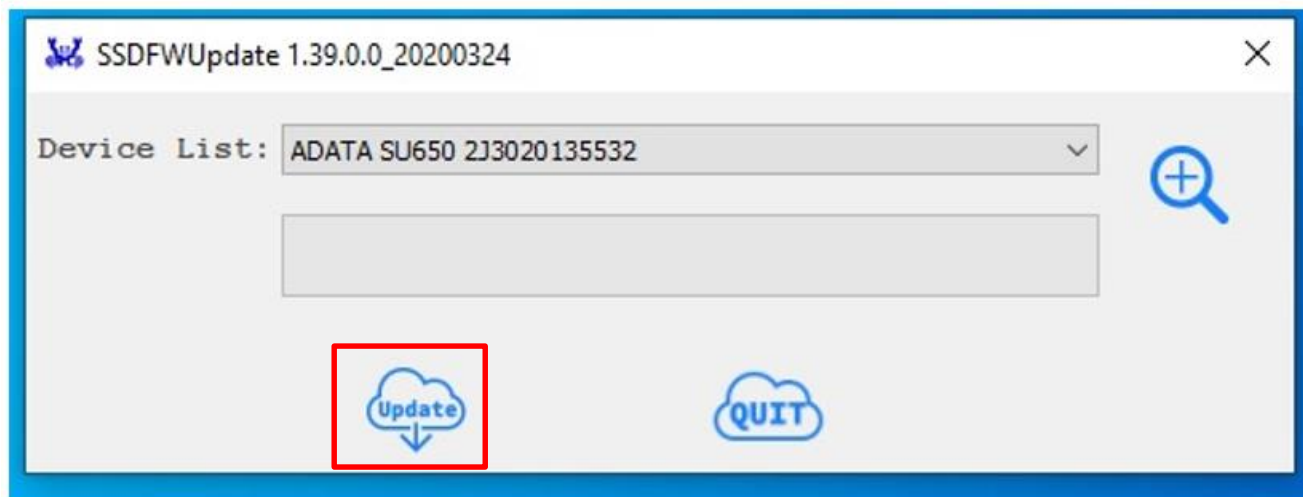




ADATA SU650 FW Update SOP

Step3. :

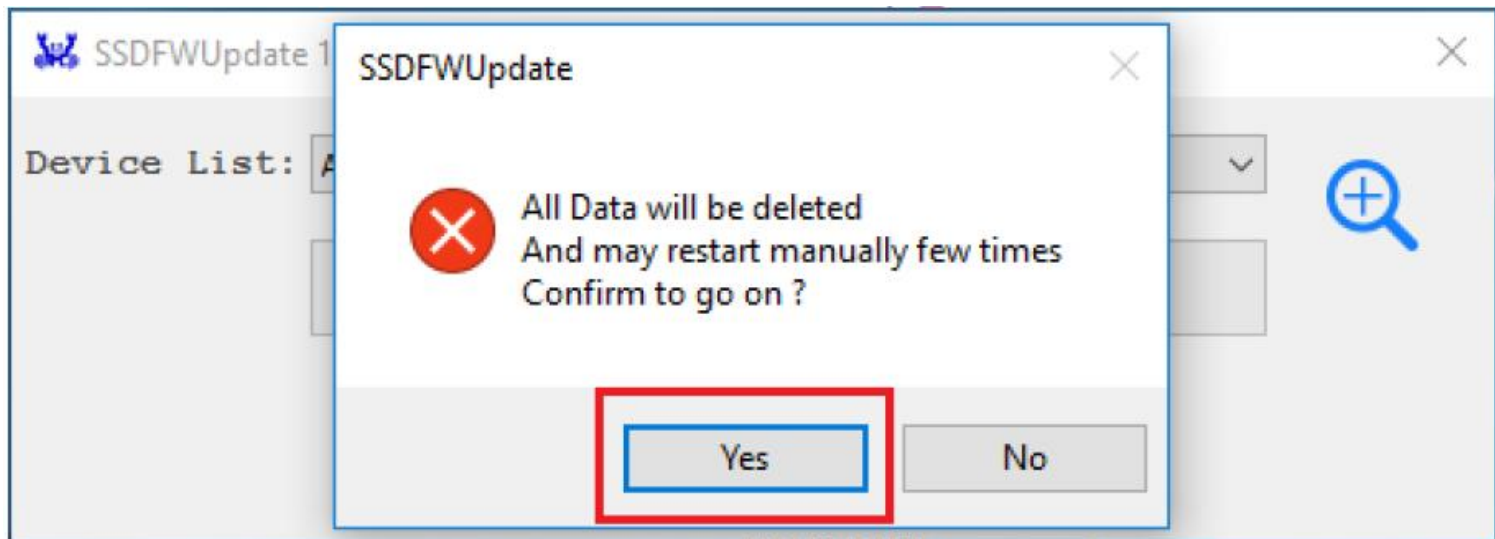
Click “Update” as red mark to start SSD firmware update.



ADATA SU650 FW Update SOP

Step4. :

Press “Yes” when this screen is showed

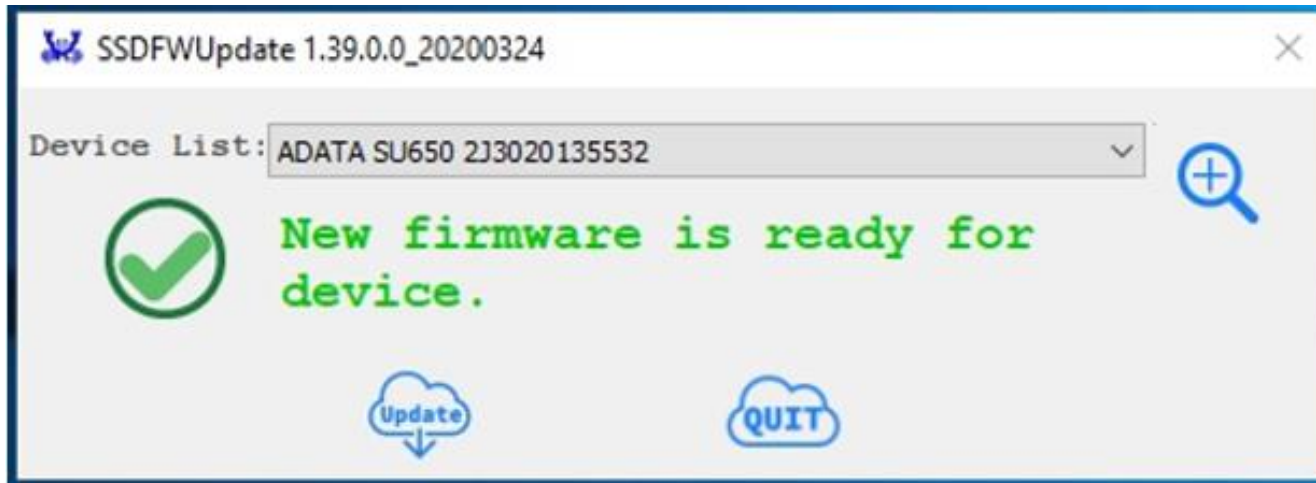


ADATA SU650 FW Update SOP

Step5. :

When Finish the SSD initialization, screen will show “ New firmware is ready for device”.

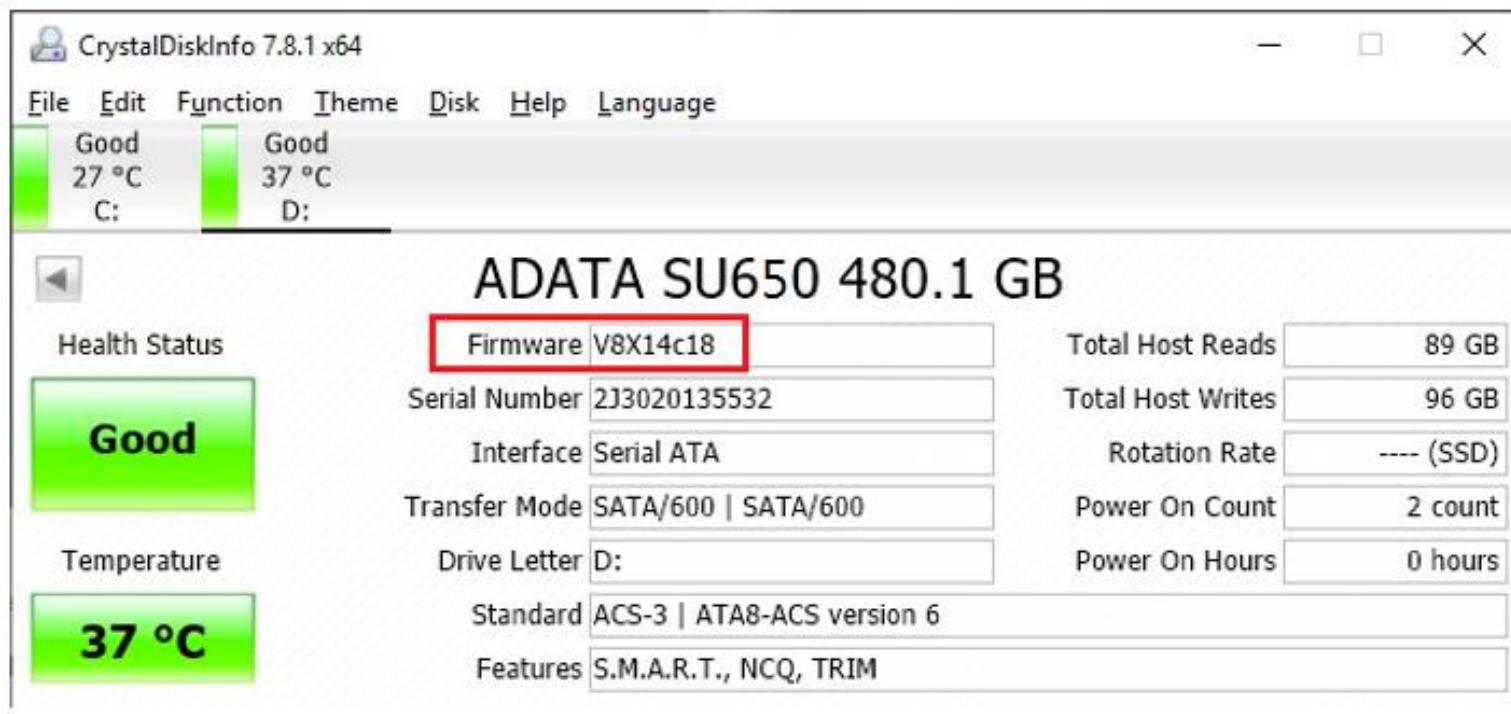
Then need to shutdown and restart system by manually.



ADATA SU650 FW Update SOP

Step6. :

Please check SSD FW version by ADATA SSD Tool box or CrystalDiskInfo, make sure FW version had been upgraded to newest version.



CrystalDiskInfo 7.8.1 x64

File Edit Function Theme Disk Help Language

Good 27 °C C: Good 37 °C D:

ADATA SU650 480.1 GB

Health Status	Firmware V8X14c18	Total Host Reads	89 GB
Good	Serial Number 2J3020135532	Total Host Writes	96 GB
Temperature	Interface Serial ATA	Rotation Rate	---- (SSD)
37 °C	Transfer Mode SATA/600 SATA/600	Power On Count	2 count
	Drive Letter D:	Power On Hours	0 hours
	Standard ACS-3 ATA8-ACS version 6		
	Features S.M.A.R.T., NCQ, TRIM		



Love · Life · Dreams

