

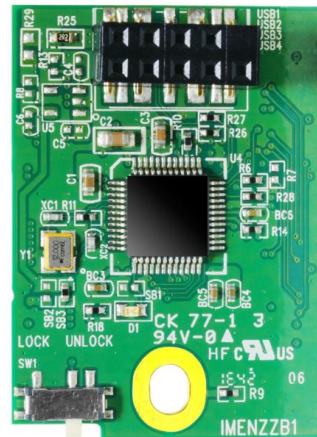
USB DOM



ADATA Flash Modules are designed for industrial computers with special specifications and applications. The module interface supports both SATA and USB, making the device easy to install while complying with JEDEC specifications. All products in the series take advantage of ADATA's A+ Testing Methodology. Rigorous testing ensures the production of the best quality products that satisfy requirements for extreme quality and reliability of industrial computers. The compact size of the modules is perfectly suited for kiosk, gaming, medical and industrial computers, or embedded application systems, making it the best choice for industrial control applications.

Key Features

- Compatible with standard USB 2.0 interface
- Standard 10 pin USB interface (pin 9 is for direction keys)
- Available with standard 2.0/2.54mm pitch connectors
- Low power consumption: 1W
- Data read/write protection switch
- Hardware power detector and Flash protection
- Suitable for desktops, compact computers, industrial computers, and embedded applications



Target Applications

Desktops, compact computers, industrial computers, and embedded applications

	ESD & EMI Safe	Shock & Vibration Resistant	Power Fail Protection & Recovery	Wear Leveling
IUMU23C	●	●	●	●

● Supported



USB DOM



Specifications

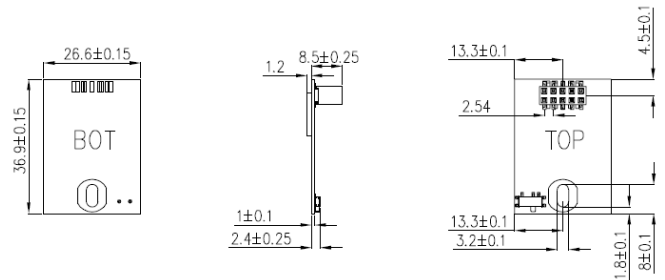
Model	IUMU23C
Capacity	512MB – 4GB
Dimensions (L x W x H)	2.54mm - 36.9x26.6x5.0(mm) ; 2.0mm - 36.9x26.6x75(mm)
Interface	USB 10PIN (w/connector pitch: 2.54mm & 2.00mm)
Capacity	128GB-512GB
Operating Voltage	5V
Power Consumption	1W
Shock Resistance	1500G/0.5ms, Half-Sine Wave
Operating Temperature	0°C to 70°C
Operating Humidity	5%-95% RH non-condensing
Sequential Read (Max)	19MB/s
Sequential Write (Max)	18MB/s
Data Transfer Mode	USB 2.0
Vibration Resistance	20G (80-2000Hz)
Write Protection	Supported

Ordering Information

Capacity	0°C to 70°C
512MB	IUMU23C-512MFHS
1GB	IUMU23C-001GFHS
2GB	IUMU23C-002GFHS
4GB	IUMU23C-004GFHS

Dimensions

2.54mm connector



2.0mm connector

