



www.xpg.com

XPG XENIA 14 LIFESTYLE ULTRABOOK

THE WOW FACTOR

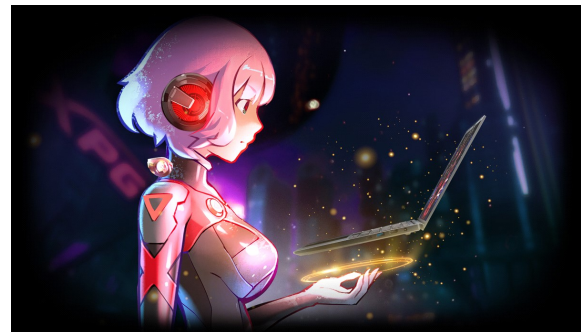


XPG XENIA 14 LIFESTYLE ULTRABOOK

This lifestyle ultrabook is equipped with 11th Gen Intel® Core™ i7 / i5 processors, Intel Iris X^e Integrated graphics, and a XPG PCIe Gen4 SSD for blazing speeds and amazing performance. What's more, its premium magnesium alloy chassis makes for a ultra-lightweight laptop that's easy to carry around.

XTREME LIGHT WEIGHT OF ONLY 970g

Revel in the premium, and slim design (thickness 15mm) built with magnesium alloy that comes with the xtreme lightweight of less than 970g.



SPEED AHEAD WITH PCIe 4.0 XPG SSD

Shining XPG own DNA in building the best SSD, XPG XENIA 14 bring to market with the latest PCIe Gen4 Solid State Drives – XPG GAMMIX S50 LITE. Enjoy a new level of gaming performance with improved loading speeds & almost zero latency.



www.xpg.com

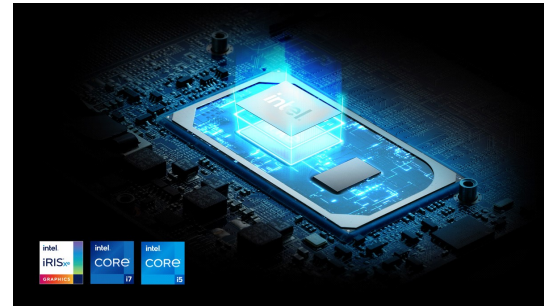


POWERED BY XPG DDR4 MEMORY

XPG XENIA 14 has some serious gaming DNA with its XPG 3200MHz DDR4 sorted memory. 16GB to go around for all your multitasking needs. Besides, you can increase your DRAM capacity by adding an extra SO-DIMM to up to 32GB capacity in total or upgrade all of DRAM to up to 64GB in total.

Intel® 11 GEN CPU + Iris® Xe GRAPHICS

Built-into the 11th Gen Intel® Core™ i7 or i5 mobile processors, the XENIA 14 delivers great performance for light gaming. Also, Intel® Iris Xe graphics allows the XPG XENIA 14 to power pixel-perfect productivity or entertainment.

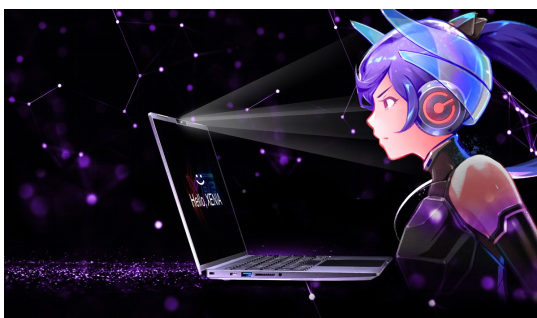


VERSATILE I/O PORTS & THUNDERBOLT4

A versatile combination of I/O ports, including multiple USB Type-C with Thunderbolt 4 for both convenient charging and high speed data transfer, USB Type-C, USB 3 Gen1 Type-A Ports, a 3.5mm Audio Combo Jack, an HDMI 2.0b Port, a SD/SDHC/SDXC Card Reader, and a DC jack. .

92% SCREEN-BODY RATIO & 2MM BEZEL

XPG XENIA 14 has a 2mm super-narrow bezel design with a 92% screen-to-body ratio gives users more screen, less weight and distractions. Also, user can easily open the notebook with one hand.



SUPPORT WINDOWS HELLO

It supports Windows Hello and can awake from sleep mode in seconds, thanks to its IR Camera for face recognition, and it is positioned above the display.



Specifications

- **Processor:**
11th Gen Intel® Core™ i7-1165G7 or
11th Gen Intel® Core™ i5-1135G7
- **Graphics:**
Integrated Intel® Iris X^e
- **Display:**
14.0" Narrow Bezel (92% screen-to-body ratio),
16:10, FHD, 60HZ, IPS, 400 Nits, 100% sRGB
- **Storage:**
XPG GAMMIX S50 LITE PCIe Gen 4x4 NVMe
512GB SSD - M.2 2280
- **Memory:**
16GB DDR4, 3200MHz, (Up to 64GB)
- **Battery:**
53Whr (Up to 10 hours battery life)
- **Keyboard:**
Silent Membrane White Back Lighting,
- **Touchpad:**
Glass Click Pad with Microsoft Precision
Touch Pad Driver Support
- **Network:**
Intel® Wi-Fi 6 AX201, Bluetooth 5.1
- **I/O PORTS**
1x Thunderbolt 4 (USB 4, DP1.4)
1x USB3 Gen 2 Type C
2x USB3 Gen 1 Type A
1x HDMI 2.0b / 1x Audio Jack
1x SD Card Reader (UHS-I, SD/SDHC/SDXC)
- **WARRANTY**
1 Year Warranty
- **Certifications**
FCC, cUL, CE, CB, RCM, BSMI, NCC, RoHS, WEEE

Features

- Slim and Light Magnesium Alloy Chassis
- High Speed XPG GAMMIX S50 LITE 512GB PCIe Gen4 SSD
- Up to 16GB of Premium XPG 3200MHz DDR4 Memory
- 11th Gen Intel® Processor with Intel® Iris® X^e Graphics
- Best in Class Versatile Selection of I/O Ports
- Super Narrow 2mm Bezels with 92% Screen to Body Ratio
- 14", 16:10, Bright and Color Accurate IPS Display
- Thunderbolt™ 4 Technology
- Supports Wi-Fi 6 & Bluetooth 5.1
- Up to 10 Hours of Battery Life and Fast Charging Capability
- HD IR Camera with Windows Hello Support
- Xbox Game Pass 1-Month Free-Trial

Ordering Information

USA

Model Number	EAN Code
15260046	4711085933003
15260048	4711085933027

Mexico

Model Number	EAN Code
15260047	4711085933010
15260049	4711085933034

16GB DDR4-3200MHz

Part Number	Package
AD4S320016G22-SGN	Single Tray
AD4S320016G22-RGN	Pager Card